

For Research Use Only

GPR17 Polyclonal antibody

Catalog Number: 13416-1-AP



Basic Information

Catalog Number: 13416-1-AP	GenBank Accession Number: BC031653	Purification Method: Antigen affinity purification
Size: 150ul , Concentration: 750 µg/ml by Nanodrop and 420 µg/ml by Bradford method using BSA as the standard;	GeneID (NCBI): 2840	Recommended Dilutions: WB 1:500-1:2000
Source: Rabbit	Full Name: G protein-coupled receptor 17	
Isotype: IgG	Calculated MW: 367 aa, 41 kDa	
Immunogen Catalog Number: AG4106	Observed MW: 50 kDa	

Applications

Tested Applications: FC, WB, ELISA	Positive Controls: WB : human serum tissue,
Species Specificity: human, mouse, rat	

Background Information

Storage

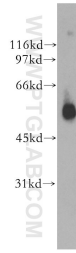
Storage:
Store at -20°C. Stable for one year after shipment.
Storage Buffer:
PBS with 0.02% sodium azide and 50% glycerol pH 7.3.
Aliquoting is unnecessary for -20°C storage

*** 20ul sizes contain 0.1% BSA

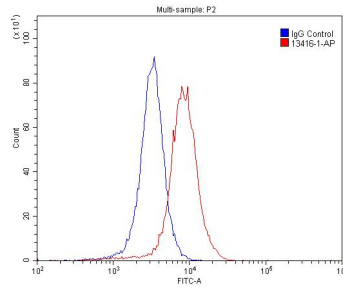
For technical support and original validation data for this product please contact:
T: 1 (888) 4PTGLAB (1-888-478-4522) (toll free in USA), or 1(312) 455-8498 (outside USA)
E: proteintech@ptglab.com
W: ptglab.com

This product is exclusively available under Proteintech Group brand and is not available to purchase from any other manufacturer.

Selected Validation Data



human serum were subjected to SDS PAGE followed by western blot with 13416-1-AP (GPR17 antibody) at dilution of 1:300 incubated at room temperature for 1.5 hours.



1X10⁶ SH-SY5Y cells were stained with 0.2ug GPR17 antibody (13416-1-AP, red) and control antibody (blue). Fixed with 4% PFA blocked with 3% BSA (30 min). Alexa Fluor 488-conjugated AffiniPure Goat Anti-Rabbit IgG(H+L) with dilution 1:1500.