

For Research Use Only

# GSK3A Polyclonal antibody, PBS Only

Catalog Number: 13419-1-PBS



## Basic Information

### Catalog Number:

13419-1-PBS

### Size:

100ug , Concentration: 1 mg/ml by Nanodrop;

### Source:

Rabbit

### Isotype:

IgG

### Immunogen Catalog Number:

AG4168

### GenBank Accession Number:

BC027984

### GeneID (NCBI):

2931

### UNIPROT ID:

P49840

### Full Name:

glycogen synthase kinase 3 alpha

### Calculated MW:

483 aa, 51 kDa

### Observed MW:

51 kDa

### Purification Method:

Antigen affinity purification

## Applications

### Tested Applications:

WB, IHC, IF/ICC, Indirect ELISA

### Species Specificity:

human, mouse, rat

## Background Information

GSK3A (glycogen synthase kinase 3 alpha), one of the two functional isoforms encoded by the GSK3 gene, is a serine/threonine protein kinase that is involved in cell-cycle progression, differentiation, and apoptosis (PMID: 27049759). GSK3A acts as a tumor suppressor and has important roles in acute myeloid leukemia (AML), prostate cancer, and pancreatic cancer (PMID: 22326953, 22539113, 23547054). GSK3A is also known to interact with beta-amyloid and tau, proteins that aggregate in areas of the neuronal system as part of the pathology of neurodegenerative diseases such as Alzheimer's disease (PMID: 19782073).

## Storage

### Storage:

Store at -80°C.

### Storage Buffer:

PBS Only

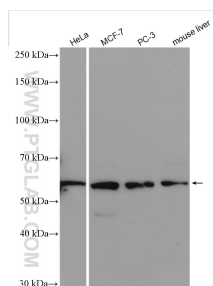
For technical support and original validation data for this product please contact:

T: 1 (888) 4PTGLAB (1-888-478-4522) (toll free in USA), or 1(312) 455-8498 (outside USA)

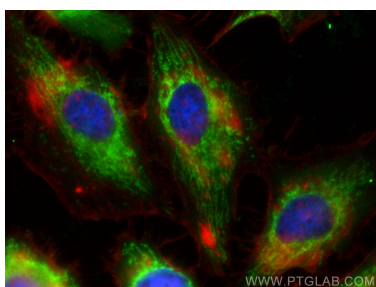
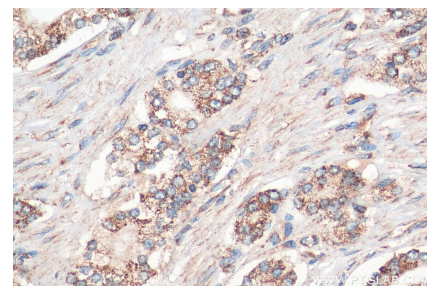
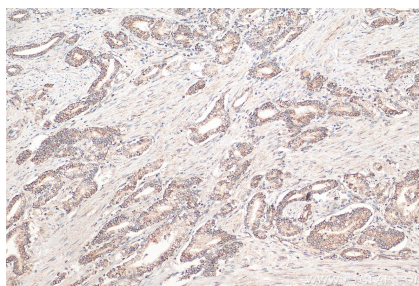
E: [proteintech@ptglab.com](mailto:proteintech@ptglab.com)  
W: [ptglab.com](http://ptglab.com)

This product is exclusively available under Proteintech Group brand and is not available to purchase from any other manufacturer.

## Selected Validation Data



Various lysates were subjected to SDS PAGE followed by western blot with 13419-1-AP (GSK3A antibody) at dilution of 1:5000 incubated at room temperature for 1.5 hours. This data was developed using the same antibody clone with 13419-1-PBS in a different storage buffer formulation.



Immunofluorescent analysis of (-20°C Ethanol) fixed HeLa cells using GSK3A antibody (13419-1-AP) at dilution of 1:400 and CoraLite®488-Conjugated AffiniPure Goat Anti-Rabbit IgG(H+L) (SA00013-2). This data was developed using the same antibody clone with 13419-1-PBS in a different storage buffer formulation.