

For Research Use Only

Caspase 8/P43/P18 Polyclonal antibody, PBS Only

Catalog Number: 13423-1-PBS

Featured Product



Basic Information

Catalog Number:

13423-1-PBS

Size:

100ug, Concentration: 1mg/ml by Nanodrop;

Source:

Rabbit

Isotype:

IgG

Immunogen Catalog Number:

AG4214

GenBank Accession Number:

BC028223

GeneID (NCBI):

841

UNIPROT ID:

Q14790

Full Name:

caspase 8, apoptosis-related cysteine peptidase

Calculated MW:

538 aa, 62 kDa

Observed MW:

53-57 kDa, 32-45 kDa

Purification Method:

Antigen affinity purification

Applications

Tested Applications:

WB, IHC, IF/ICC, IP, ELISA

Species Specificity:

human, mouse

Background Information

CASP8, also named as MCH5, MACH, FLICE, and CAP4, belongs to the peptidase C14A family. It may participate in the GZMB apoptotic pathways and functions as an upstream regulator in a-bisabolol-induced apoptosis. CASP8 catalyzes an essential intermediate step in the ubiquitination and proteasome-mediated degradation of IRF3(PMID:21816816). It may control diabetic embryopathy-associated apoptosis via regulation of the Bid-stimulated mitochondrion/caspase-9 pathway (PMID:19194987). CASP8 is expressed as nine isoforms by alternative splicing with the molecular mass from 26 kDa to 62 kDa. This antibody can recognize the pro- and cleaved-caspase 8.

Storage

Storage:

Store at -80°C.

Storage Buffer:

PBS only, pH7.3

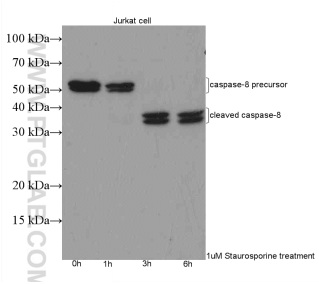
For technical support and original validation data for this product please contact:

T: 1 (888) 4PTGLAB (1-888-478-4522) (toll free in USA), or 1(312) 455-8498 (outside USA)

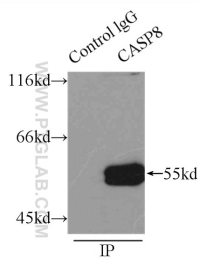
E: proteintech@ptglab.com
W: ptglab.com

This product is exclusively available under Proteintech Group brand and is not available to purchase from any other manufacturer.

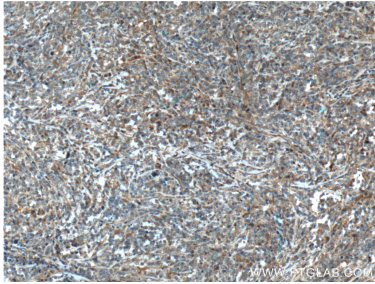
Selected Validation Data



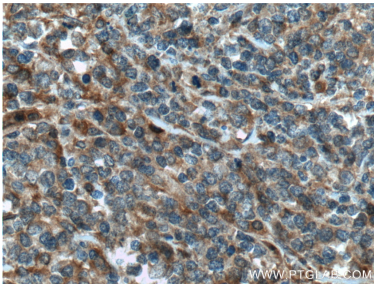
Staurosporine treated Jurkat cells were subjected to SDS PAGE followed by western blot with 13423-1-AP (Caspase 8/P43/P18 antibody) at dilution of 1:500 incubated at room temperature for 1.5 hours. This data was developed using the same antibody clone with 13423-1-PBS in a different storage buffer formulation.



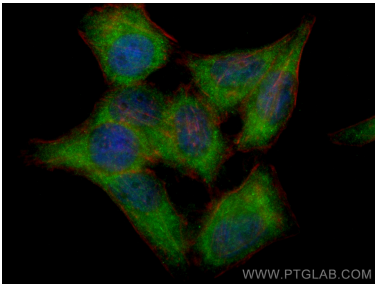
IP result of anti-Caspase 8/P43/P18 (IP:13423-1-AP, 3ug; Detection:13423-1-AP 1:500) with HeLa cells lysate 2500ug. This data was developed using the same antibody clone with 13423-1-PBS in a different storage buffer formulation.



Immunohistochemical analysis of paraffin-embedded human lymphoma tissue slide using 13423-1-AP (Caspase 8/P43/P18 Antibody) at dilution of 1:200 (under 10x lens). Heat mediated antigen retrieval with Tris-EDTA buffer (pH 9.0). This data was developed using the same antibody clone with 13423-1-PBS in a different storage buffer formulation.



Immunohistochemical analysis of paraffin-embedded human lymphoma tissue slide using 13423-1-AP (Caspase 8/P43/P18 Antibody) at dilution of 1:200 (under 40x lens). Heat mediated antigen retrieval with Tris-EDTA buffer (pH 9.0). This data was developed using the same antibody clone with 13423-1-PBS in a different storage buffer formulation.



Immunofluorescent analysis of (-20°C Ethanol) fixed HepG2 cells using Caspase 8/P43/P18 antibody (13423-1-AP) at dilution of 1:200 and CoraLite® 488-Conjugated AffiniPure Goat Anti-Rabbit IgG(H+L), CL594-Phalloidin (red). This data was developed using the same antibody clone with 13423-1-PBS in a different storage buffer formulation.