

For Research Use Only

DLAT Polyclonal antibody, PBS Only

Catalog Number: 13426-1-PBS

Featured Product



Basic Information

Catalog Number:

13426-1-PBS

Size:

100ug, Concentration: 1 mg/ml by Nanodrop;

Source:

Rabbit

Isotype:

IgG

Immunogen Catalog Number:

AG4226

GenBank Accession Number:

BC039084

GeneID (NCBI):

1737

UNIPROT ID:

P10515

Full Name:

dihydrolipoamide S-acetyltransferase

Calculated MW:

647 aa, 70 kDa

Observed MW:

69-70 kDa

Purification Method:

Antigen affinity purification

Applications

Tested Applications:

WB, IHC, IF/ICC, IP, Indirect ELISA

Species Specificity:

human, mouse, rat

Storage

Storage:

Store at -80°C.

Storage Buffer:

PBS only, pH7.3

For technical support and original validation data for this product please contact:

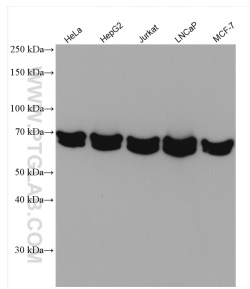
T: 1 (888) 4PTGLAB (1-888-478-4522) (toll free in USA), or 1(312) 455-8498 (outside USA)

E: proteintech@ptglab.com

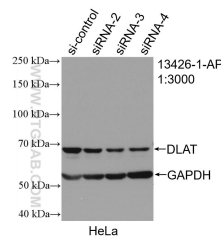
W: ptglab.com

This product is exclusively available under Proteintech Group brand and is not available to purchase from any other manufacturer.

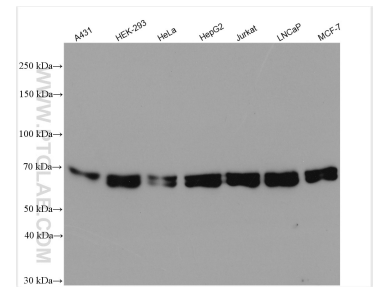
Selected Validation Data



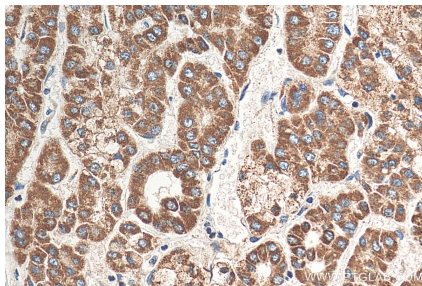
Various lysates were subjected to SDS PAGE followed by western blot with 13426-1-AP (DLAT antibody) at dilution of 1:5000 incubated at room temperature for 1.5 hours. This data was developed using the same antibody clone with 13426-1-PBS in a different storage buffer formulation.



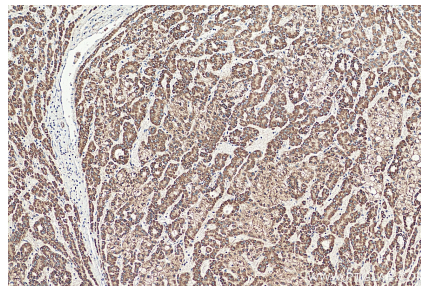
WB result of DLAT antibody (13426-1-AP; 1:3000; incubated at room temperature for 1.5 hours) with sh-Control and sh-DLAT transfected HeLa cells. This data was developed using the same antibody clone with 13426-1-PBS in a different storage buffer formulation.



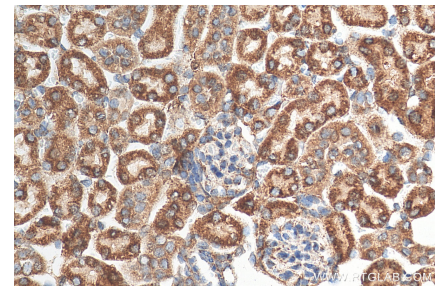
Various lysates were subjected to SDS PAGE followed by western blot with 13426-1-AP (DLAT antibody) at dilution of 1:30000 incubated at room temperature for 1.5 hours. This data was developed using the same antibody clone with 13426-1-PBS in a different storage buffer formulation.



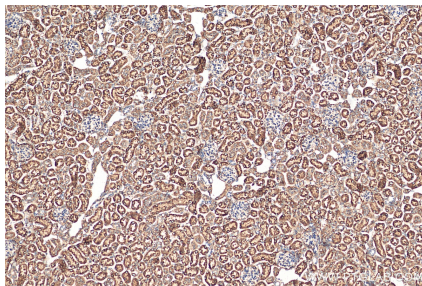
Immunohistochemical analysis of paraffin-embedded human liver cancer tissue slide using 13426-1-AP (DLAT antibody) at dilution of 1:1000 (under 40x lens). Heat mediated antigen retrieval with Tris-EDTA buffer (pH 9.0). This data was developed using the same antibody clone with 13426-1-PBS in a different storage buffer formulation.



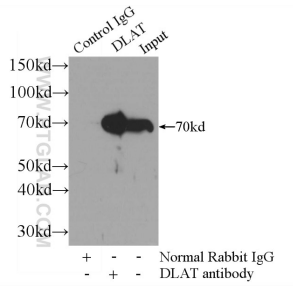
Immunohistochemical analysis of paraffin-embedded human liver cancer tissue slide using 13426-1-AP (DLAT antibody) at dilution of 1:1000 (under 10x lens). Heat mediated antigen retrieval with Tris-EDTA buffer (pH 9.0). This data was developed using the same antibody clone with 13426-1-PBS in a different storage buffer formulation.



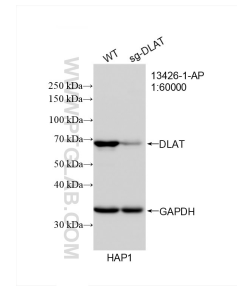
Immunohistochemical analysis of paraffin-embedded mouse kidney tissue slide using 13426-1-AP (DLAT antibody) at dilution of 1:1000 (under 40x lens). Heat mediated antigen retrieval with Tris-EDTA buffer (pH 9.0). This data was developed using the same antibody clone with 13426-1-PBS in a different storage buffer formulation.



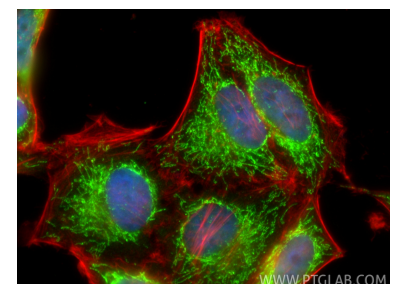
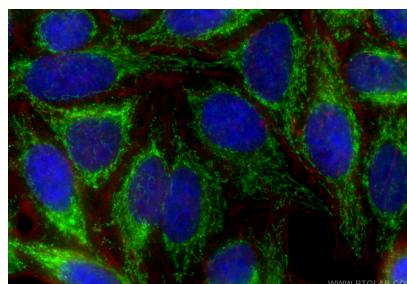
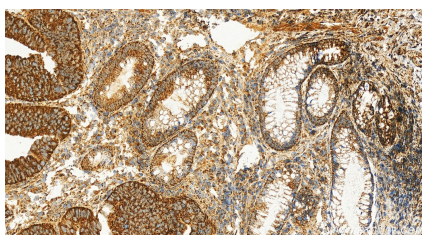
Immunohistochemical analysis of paraffin-embedded mouse kidney tissue slide using 13426-1-AP (DLAT antibody) at dilution of 1:1000 (under 10x lens). Heat mediated antigen retrieval with Tris-EDTA buffer (pH 9.0). This data was developed using the same antibody clone with 13426-1-PBS in a different storage buffer formulation.



IP result of anti-DLAT (IP:13426-1-AP, 3ug; Detection:13426-1-AP 1:1000) with HepG2 cells lysate 2000ug. This data was developed using the same antibody clone with 13426-1-PBS in a different storage buffer formulation.



WB result of DLAT antibody (13426-1-AP; 1:60000; room temperature for 1.5 hours) with wild-type and DLAT knockout HAP1 cells. This data was developed using the same antibody clone with 13426-1-PBS in a different storage buffer formulation.



Immunohistochemical analysis of paraffin-embedded human colon cancer tissue slide using 13426-1-AP (DLAT antibody) at dilution of 1:500 (under 20x lens). Heat mediated antigen retrieval with Tris-EDTA buffer (pH 9.0). This data was developed using the same antibody clone with 13426-1-PBS in a different storage buffer formulation.

Immunofluorescent analysis of (-20°C Ethanol) fixed HepG2 cells using DLAT antibody (13426-1-AP) at dilution of 1:400 and Multi-rAb CoraLite® Plus 488-Goat Anti-Rabbit Recombinant Secondary Antibody (H+L) (RGAR002), CL594-Phalloidin (red). This data was developed using the same antibody clone with 13426-1-PBS in a different storage buffer formulation.

Immunofluorescent analysis of (4% PFA) fixed HepG2 cells using DLAT antibody (13426-1-AP) at dilution of 1:400 and CoraLite®488-Conjugated Goat Anti-Rabbit IgG(H+L) (SA00013-2), CL594-phalloidin (red). This data was developed using the same antibody clone with 13426-1-PBS in a different storage buffer formulation.