

For Research Use Only

# CNPase Polyclonal antibody

Catalog Number: 13427-1-AP

21 Publications



## Basic Information

### Catalog Number:

13427-1-AP

### Size:

150ul, Concentration: 550 ug/ml by Nanodrop and 333 ug/ml by Bradford method using BSA as the standard;

### Source:

Rabbit

### Isotype:

IgG

### Immunogen Catalog Number:

AG4227

### GenBank Accession Number:

BC028040

### GeneID (NCBI):

1267

### UNIPROT ID:

P09543

### Full Name:

2',3'-cyclic nucleotide 3' phosphodiesterase

### Calculated MW:

421 aa, 48 kDa

### Observed MW:

45-48 kDa

### Purification Method:

Antigen affinity purification

### Recommended Dilutions:

WB: 1:500-1:3000

IHC: 1:20-1:200

IF-P: 1:50-1:500

FC (Intra): 0.40 ug per 10<sup>6</sup> cells in a 100 µl suspension

## Applications

### Tested Applications:

WB, IHC, IF-P, FC (Intra), ELISA

### Cited Applications:

WB, IHC, IF

### Species Specificity:

human, mouse, rat

### Cited Species:

human, mouse, rat

### Positive Controls:

WB: HeLa cells, HepG2 cells, mouse brain tissue, rat brain tissue

IHC: mouse brain tissue,

IF-P: mouse brain tissue,

FC (Intra): HepG2 cells,

**Note-IHC: suggested antigen retrieval with TE buffer pH 9.0; (\*) Alternatively, antigen retrieval may be performed with citrate buffer pH 6.0**

## Background Information

CNP(2',3'-cyclic-nucleotide 3'-phosphodiesterase) belongs to the cyclic nucleotide phosphodiesterase family. It plays an essential role in axonal survival but not in myelin assembly, coupling oligodendroglial functions in axonal support and myelination. This protein has 2 isoforms produced by alternative splicing with molecular mass of 45 and 48 kDa.

## Notable Publications

Author	Pubmed ID	Journal	Application
Jiuyang Ding	34562559	Toxicol Lett	IHC
Li Zhang	32921051	Acta Physiol (Oxf)	WB
Ting Gao	36460235	Neurosci Lett	WB

## Storage

### Storage:

Store at -20°C. Stable for one year after shipment.

### Storage Buffer:

PBS with 0.02% sodium azide and 50% glycerol, pH7.3

Aliquoting is unnecessary for -20°C storage

\*\*\* 20ul sizes contain 0.1% BSA

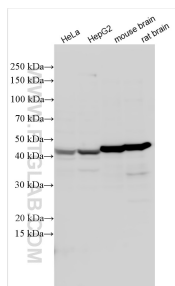
For technical support and original validation data for this product please contact:

T: 1 (888) 4PTGLAB (1-888-478-4522) (toll free in USA), or 1(312) 455-8498 (outside USA)

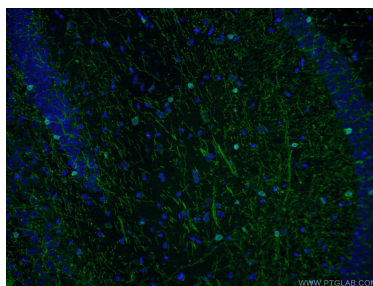
E: proteintech@ptglab.com  
W: ptglab.com

This product is exclusively available under Proteintech Group brand and is not available to purchase from any other manufacturer.

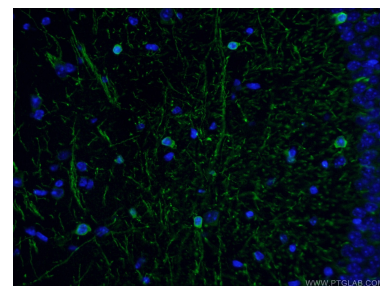
## Selected Validation Data



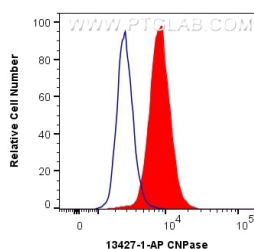
Various lysates were subjected to SDS PAGE followed by western blot with 13427-1-AP (CNPase antibody) at dilution of 1:1500 incubated at room temperature for 1.5 hours.



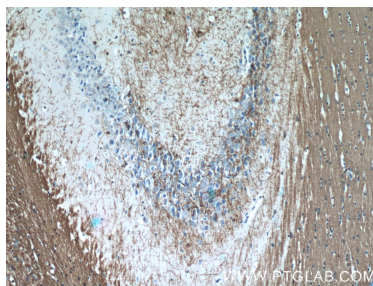
Immunofluorescent analysis of (4% PFA) fixed mouse brain tissue using 13427-1-AP (CNPase antibody) at dilution of 1:50 and Alexa Fluor 488-Conjugated Goat Anti-Rabbit IgG(H+L).



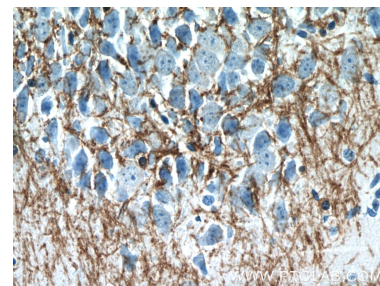
Immunofluorescent analysis of (4% PFA) fixed mouse brain tissue using 13427-1-AP (CNPase antibody) at dilution of 1:50 and Alexa Fluor 488-Conjugated Goat Anti-Rabbit IgG(H+L).



1X10<sup>6</sup> HepG2 cells were intracellularly stained with 0.4 ug Anti-Human CNPase (13427-1-AP) and CoraLite®488-Conjugated Goat Anti-Rabbit IgG(H+L) at dilution 1:1000 (red), or 0.4 ug Control Antibody. Cells were fixed with 4% PFA and permeabilized with Flow Cytometry Perm Buffer (PF00011-C).



Immunohistochemical analysis of paraffin-embedded mouse brain tissue slide using 13427-1-AP (CNPase antibody) at dilution of 1:50 (under 10x lens).



Immunohistochemical analysis of paraffin-embedded mouse brain tissue slide using 13427-1-AP (CNPase antibody) at dilution of 1:50 (under 40x lens).