

For Research Use Only

POLR2C Polyclonal antibody

Catalog Number: 13428-1-AP

4 Publications



Basic Information

Catalog Number:

13428-1-AP

Size:

150ul, Concentration: 800 µg/ml by Nanodrop and 400 µg/ml by Bradford method using BSA as the standard;

Source:

Rabbit

Isotype:

IgG

Immunogen Catalog Number:

AG4228

GenBank Accession Number:

BC028157

GeneID (NCBI):

5432

Full Name:

polymerase (RNA) II (DNA directed) polypeptide C, 33kDa

Calculated MW:

275 aa, 33 kDa

Observed MW:

33 kDa

Purification Method:

Antigen affinity purification

Recommended Dilutions:

WB 1:1000-1:4000

IP 0.5-4.0 µg for IP and 1:500-1:1000

for WB

IHC 1:20-1:200

Applications

Tested Applications:

IHC, IP, WB, ELISA

Cited Applications:

WB

Species Specificity:

human, mouse, rat

Cited Species:

human, mouse

Note-IHC: suggested antigen retrieval with TE buffer pH 9.0; (*) Alternatively, antigen retrieval may be performed with citrate buffer pH 6.0

Positive Controls:

WB: mouse kidney tissue, HeLa cells

IP: HeLa cells,

IHC: human cervical cancer tissue,

Background Information

Notable Publications

Author	Pubmed ID	Journal	Application
Yuanjun Li	36113479	Mol Cell	WB
Yongpeng Jiang	36443871	Genome Biol	
Hao-Peng Lin	27165101	Biomed Microdevices	WB

Storage

Storage:

Store at -20°C. Stable for one year after shipment.

Storage Buffer:

PBS with 0.02% sodium azide and 50% glycerol pH 7.3.

Aliquoting is unnecessary for -20°C storage

*** 20ul sizes contain 0.1% BSA

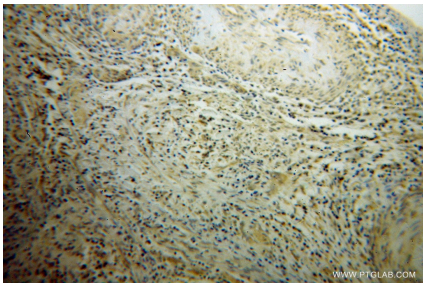
For technical support and original validation data for this product please contact:

T: 1 (888) 4PTGLAB (1-888-478-4522) (toll free in USA), or 1(312) 455-8498 (outside USA)

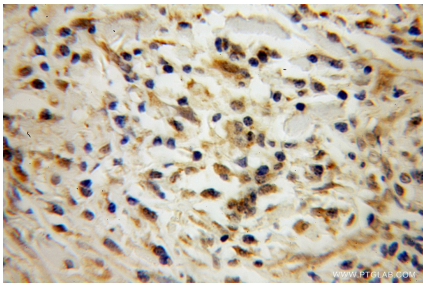
E: proteintech@ptglab.com
W: ptglab.com

This product is exclusively available under Proteintech Group brand and is not available to purchase from any other manufacturer.

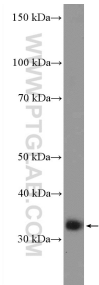
Selected Validation Data



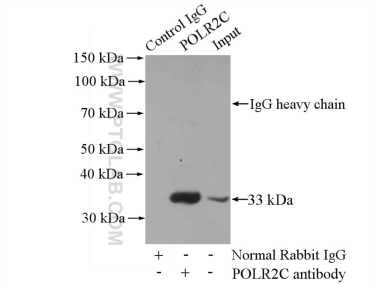
Immunohistochemical analysis of paraffin-embedded human cervical cancer using 13428-1-AP (POLR2C antibody) at dilution of 1:100 (under 10x lens).



Immunohistochemical analysis of paraffin-embedded human cervical cancer using 13428-1-AP (POLR2C antibody) at dilution of 1:100 (under 40x lens).



mouse kidney tissue were subjected to SDS PAGE followed by western blot with 13428-1-AP (POLR2C Antibody) at dilution of 1:2000 incubated at room temperature for 1.5 hours.



IP Result of anti-POLR2C (IP:13428-1-AP, 4ug; Detection:13428-1-AP 1:500) with HeLa cells lysate 2000ug.