

For Research Use Only

# CSRP1 Polyclonal antibody, PBS Only

Catalog Number: 13432-1-PBS



## Basic Information

**Catalog Number:**

13432-1-PBS

**Size:**

100ug, Concentration: 1 mg/ml by Nanodrop;

**Source:**

Rabbit

**Isotype:**

IgG

**Immunogen Catalog Number:**

AG4236

**GenBank Accession Number:**

BC032493

**GeneID (NCBI):**

1465

**UNIPROT ID:**

P21291

**Full Name:**

cysteine and glycine-rich protein 1

**Calculated MW:**

193 aa, 21 kDa

**Observed MW:**

21 kDa

**Purification Method:**

Antigen affinity purification

## Applications

**Tested Applications:**

WB, IHC, IP, Indirect ELISA

**Species Specificity:**

human, mouse

## Background Information

CSRP1 (Cysteine and glycine-rich protein 1), designated initially as CRP1, constitutes a cysteine-rich protein derived from placental sources and exhibits a response profile analogous to c-myc. CSRP1 has been recognized as a tumor suppressor in several types of cancers including colorectal cancer, and cholangiocarcinoma (PMID: 37113556). Abnormal expression of CSRP1 was reported within several malignancies such as prostate cancer and acute myeloid leukemia (PMID: 38813484, 40198006).

## Storage

**Storage:**

Store at -80°C.

**Storage Buffer:**

PBS only, pH7.3

For technical support and original validation data for this product please contact:

T: 1 (888) 4PTGLAB (1-888-478-4522) (toll free in USA), or 1(312) 455-8498 (outside USA)

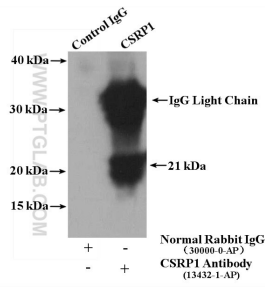
E: [proteintech@ptglab.com](mailto:proteintech@ptglab.com)  
W: [ptglab.com](http://ptglab.com)

**This product is exclusively available under Proteintech Group brand and is not available to purchase from any other manufacturer.**

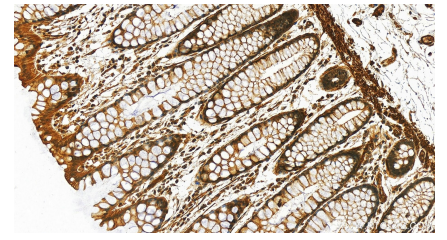
## Selected Validation Data



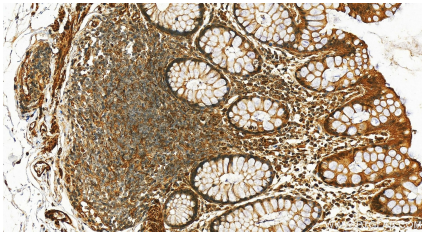
human stomach tissue were subjected to SDS PAGE followed by western blot with 13432-1-AP (CSR1 antibody) at dilution of 1:500 incubated at room temperature for 1.5 hours. This data was developed using the same antibody clone with 13432-1-PBS in a different storage buffer formulation.



mouse stomach tissue were subjected to SDS PAGE followed by western blot with 13432-1-AP (CSR1 antibody) at dilution of 1:300. This data was developed using the same antibody clone with 13432-1-PBS in a different storage buffer formulation.



Immunohistochemical analysis of paraffin-embedded human colon tissue slide using 13432-1-AP (CSR1 antibody) at dilution of 1:200 (under 20x lens). Heat mediated antigen retrieval with Tris-EDTA buffer (pH 9.0). This data was developed using the same antibody clone with 13432-1-PBS in a different storage buffer formulation.



Immunohistochemical analysis of paraffin-embedded human colon tissue slide using 13432-1-AP (CSR1 antibody) at dilution of 1:200 (under 20x lens). Heat mediated antigen retrieval with Tris-EDTA buffer (pH 9.0). This data was developed using the same antibody clone with 13432-1-PBS in a different storage buffer formulation.