

For Research Use Only

DVL3 Polyclonal antibody

Catalog Number: 13444-1-AP

6 Publications



Basic Information

Catalog Number:

13444-1-AP

Size:

150ul, Concentration: 750 µg/ml by Nanodrop;

Source:

Rabbit

Isotype:

IgG

Immunogen Catalog Number:

AG4272

GenBank Accession Number:

BC032459

GeneID (NCBI):

1857

Full Name:

dishevelled, dsh homolog 3 (Drosophila)

Calculated MW:

716 aa, 78 kDa

Observed MW:

78 kDa

Purification Method:

Antigen affinity purification

Recommended Dilutions:

WB 1:2000-1:6000

IP 0.5-4.0 µg for IP and 1:500-1:1000 for WB

IHC 1:500-1:2000

IF 1:50-1:500

Applications

Tested Applications:

IF, IHC, IP, WB, ELISA

Cited Applications:

IF, IHC, IP, WB

Species Specificity:

human, mouse

Cited Species:

human, mouse, Xenopus

Positive Controls:

WB: A549 cells, MCF-7 cells, Raji cells

IP: Raji cells,

IHC: human colon cancer tissue, human prostate cancer tissue, mouse colon tissue, human cervical cancer tissue

IF: HeLa cells,

Note-IHC: suggested antigen retrieval with TE buffer pH 9.0; (*) Alternatively, antigen retrieval may be performed with citrate buffer pH 6.0

Background Information

Notable Publications

Author	Pubmed ID	Journal	Application
Moonsup Lee	31270137	J Cell Biol	WB,IP
Kai Li	31831834	Oncogene	WB
Mengqi Zhu	36460966	Biol Proced Online	WB,IHC,IF

Storage

Storage:

Store at -20°C. Stable for one year after shipment.

Storage Buffer:

PBS with 0.02% sodium azide and 50% glycerol pH 7.3.

Aliquoting is unnecessary for -20°C storage

*** 20ul sizes contain 0.1% BSA

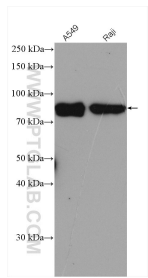
For technical support and original validation data for this product please contact:

T: 1 (888) 4PTGLAB (1-888-478-4522) (toll free in USA), or 1(312) 455-8498 (outside USA)

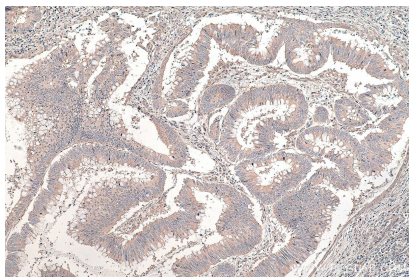
E: proteintech@ptglab.com
W: ptglab.com

This product is exclusively available under Proteintech Group brand and is not available to purchase from any other manufacturer.

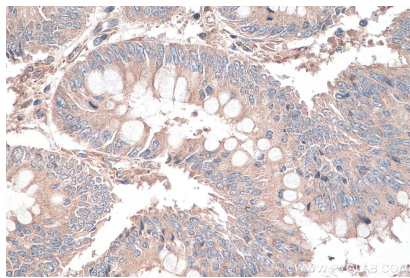
Selected Validation Data



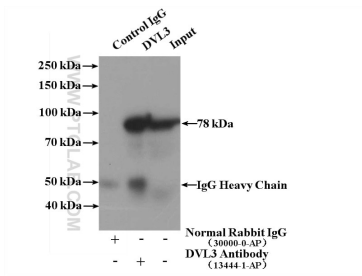
Various lysates were subjected to SDS PAGE followed by western blot with 13444-1-AP (DVL3 antibody) at dilution of 1:6000 incubated at room temperature for 1.5 hours.



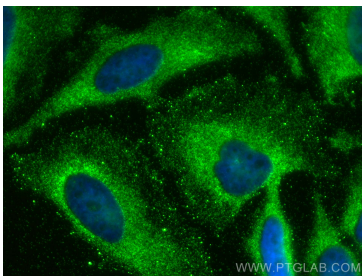
Immunohistochemical analysis of paraffin-embedded human colon cancer tissue slide using 13444-1-AP (DVL3 antibody) at dilution of 1:1000 (under 10x lens). Heat mediated antigen retrieval with Tris-EDTA buffer (pH 9.0).



Immunohistochemical analysis of paraffin-embedded human colon cancer tissue slide using 13444-1-AP (DVL3 antibody) at dilution of 1:1000 (under 40x lens). Heat mediated antigen retrieval with Tris-EDTA buffer (pH 9.0).



IP Result of anti-DVL3 (IP:13444-1-AP, 4ug; Detection:13444-1-AP 1:500) with Raji cells lysate 1440ug.



Immunofluorescent analysis of (-20°C Methanol) fixed HeLa cells using DVL3 antibody (13444-1-AP) at dilution of 1:200 and CoraLite®488-Conjugated AffiniPure Goat Anti-Rabbit IgG(H+L).