

For Research Use Only

# MAP7 Polyclonal antibody

Catalog Number: 13446-1-AP **3 Publications**



## Basic Information

<b>Catalog Number:</b> 13446-1-AP	<b>GenBank Accession Number:</b> BC025777	<b>Purification Method:</b> Antigen affinity purification
<b>Size:</b> 150ul , Concentration: 600 ug/ml by Nanodrop and 400 ug/ml by Bradford method using BSA as the standard;	<b>GeneID (NCBI):</b> 9053	<b>Recommended Dilutions:</b> WB 1:500-1:3000
<b>Source:</b> Rabbit	<b>UNIPROT ID:</b> Q14244	IP 0.5-4.0 ug for 1.0-3.0 mg of total protein lysate
<b>Isotype:</b> IgG	<b>Full Name:</b> microtubule-associated protein 7	IHC 1:50-1:500
<b>Immunogen Catalog Number:</b> AG4276	<b>Calculated MW:</b> 749 aa, 84 kDa	IF/ICC 1:200-1:800
	<b>Observed MW:</b> 100 kDa	

## Applications

<b>Tested Applications:</b> WB, IHC, IF/ICC, IP, ELISA	<b>Positive Controls:</b>
<b>Cited Applications:</b> WB, IHC, IF	<b>WB :</b> A549 cells, A431 cells, HeLa cells
<b>Species Specificity:</b> human, mouse, rat	<b>IP :</b> HeLa cells,
<b>Cited Species:</b> human	<b>IHC :</b> human colon tissue,
	<b>IF/ICC :</b> HeLa cells, HepG2 cells

**Note-IHC: suggested antigen retrieval with TE buffer pH 9.0; (\*) Alternatively, antigen retrieval may be performed with citrate buffer pH 6.0**

## Notable Publications

Author	Pubmed ID	Journal	Application
Yin Zhao	36310139	Adv Sci (Weinh)	WB,IHC
Erin M Masucci	34705476	Mol Biol Cell	IF
Nunu Mchedlishvili	29361957	BMC Biol	IF

## Storage

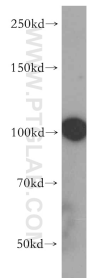
**Storage:**  
Store at -20°C. Stable for one year after shipment.  
**Storage Buffer:**  
PBS with 0.02% sodium azide and 50% glycerol pH 7.3.  
Aliquoting is unnecessary for -20°C storage

\*\*\* 20ul sizes contain 0.1% BSA

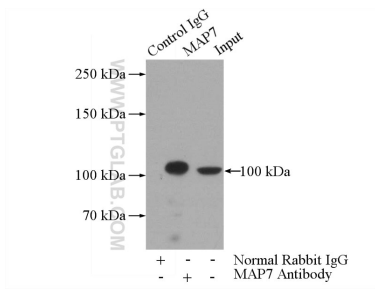
For technical support and original validation data for this product please contact:  
T: 1 (888) 4PTGLAB (1-888-478-4522) (toll free in USA), or 1(312) 455-8498 (outside USA)  
E: [proteintech@ptglab.com](mailto:proteintech@ptglab.com)  
W: [ptglab.com](http://ptglab.com)

This product is exclusively available under Proteintech Group brand and is not available to purchase from any other manufacturer.

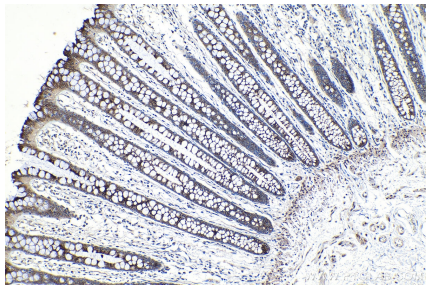
Selected Validation Data



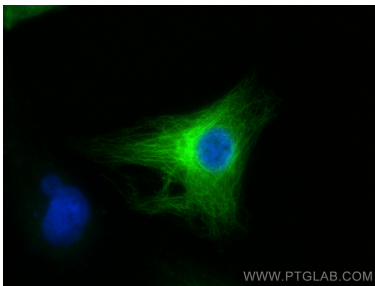
A549 cells were subjected to SDS PAGE followed by western blot with 13446-1-AP (MAP7 antibody) at dilution of 1:500 incubated at room temperature for 1.5 hours.



IP result of anti-MAP7 (IP:13446-1-AP, 4ug; Detection:13446-1-AP 1:500) with HeLa cells lysate 2000ug.



Immunohistochemical analysis of paraffin-embedded human colon tissue slide using 13446-1-AP (MAP7 antibody) at dilution of 1:200 (under 10x lens). Heat mediated antigen retrieval with Tris-EDTA buffer (pH 9.0).



Immunofluorescent analysis of (-20°C Ethanol) fixed HeLa cells using MAP7 antibody (13446-1-AP) at dilution of 1:400 and CoraLite®488-Conjugated Goat Anti-Rabbit IgG(H+L) (SA00013-2).