

For Research Use Only

MAP7 Polyclonal antibody, PBS Only

Catalog Number: 13446-1-PBS



Basic Information

Catalog Number:

13446-1-PBS

Size:

100ug, Concentration: 1 mg/ml by Nanodrop;

Source:

Rabbit

Isotype:

IgG

Immunogen Catalog Number:

AG4276

GenBank Accession Number:

BC025777

GeneID (NCBI):

9053

UNIPROT ID:

Q14244

Full Name:

microtubule-associated protein 7

Calculated MW:

749 aa, 84 kDa

Observed MW:

100 kDa

Purification Method:

Antigen affinity purification

Applications

Tested Applications:

WB, IHC, IF/ICC, IP, Indirect ELISA

Species Specificity:

human, mouse, rat

Storage

Storage:

Store at -80°C.

Storage Buffer:

PBS Only

For technical support and original validation data for this product please contact:

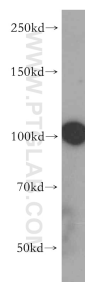
T: 1 (888) 4PTGLAB (1-888-478-4522) (toll free in USA), or 1(312) 455-8498 (outside USA)

E: proteintech@ptglab.com

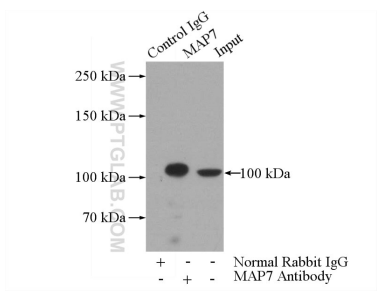
W: ptglab.com

This product is exclusively available under Proteintech Group brand and is not available to purchase from any other manufacturer.

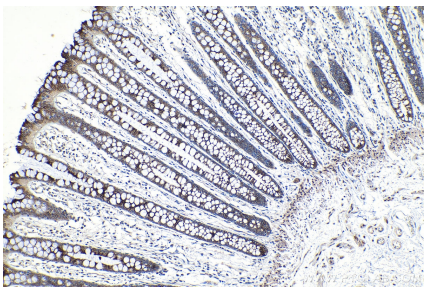
Selected Validation Data



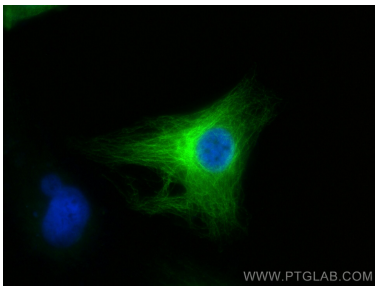
A549 cells were subjected to SDS PAGE followed by western blot with 13446-1-AP (MAP7 antibody) at dilution of 1:500 incubated at room temperature for 1.5 hours. This data was developed using the same antibody clone with 13446-1-PBS in a different storage buffer formulation.



IP result of anti-MAP7 (IP:13446-1-AP, 4ug; Detection:13446-1-AP 1:500) with HeLa cells lysate 2000ug. This data was developed using the same antibody clone with 13446-1-PBS in a different storage buffer formulation.



Immunohistochemical analysis of paraffin-embedded human colon tissue slide using 13446-1-AP (MAP7 antibody) at dilution of 1:200 (under 10x lens). Heat mediated antigen retrieval with Tris-EDTA buffer (pH 9.0). This data was developed using the same antibody clone with 13446-1-PBS in a different storage buffer formulation.



Immunofluorescent analysis of (-20°C Ethanol) fixed HeLa cells using MAP7 antibody (13446-1-AP) at dilution of 1:400 and CoraLite®488-Conjugated Goat Anti-Rabbit IgG(H+L) (SA00013-2). This data was developed using the same antibody clone with 13446-1-PBS in a different storage buffer formulation.