

For Research Use Only

MAPK15 Polyclonal antibody

Catalog Number: 13452-1-AP

1 Publications



Basic Information

Catalog Number:

13452-1-AP

Size:

150ul, Concentration: 450 ug/ml by Nanodrop and 333 ug/ml by Bradford method using BSA as the standard;

Source:

Rabbit

Isotype:

IgG

Immunogen Catalog Number:

AG4255

GenBank Accession Number:

BC028034

GeneID (NCBI):

225689

UNIPROT ID:

Q8TD08

Full Name:

mitogen-activated protein kinase 15

Calculated MW:

544 aa, 60 kDa

Observed MW:

60 kDa

Purification Method:

Antigen affinity purification

Recommended Dilutions:

WB 1:500-1:2000

IP 0.5-4.0 ug for 1.0-3.0 mg of total protein lysate

IHC 1:50-1:500

Applications

Tested Applications:

WB, IP, IHC, ELISA

Cited Applications:

WB

Species Specificity:

human, mouse, rat

Cited Species:

human

Note-IHC: suggested antigen retrieval with TE buffer pH 9.0; (*) Alternatively, antigen retrieval may be performed with citrate buffer pH 6.0

Positive Controls:

WB : mouse lung tissue,

IP : mouse lung tissue,

IHC : human kidney tissue,

Notable Publications

Author	Pubmed ID	Journal	Application
Zexin Su	32565938	Oncol Lett	WB

Storage

Storage:

Store at -20°C. Stable for one year after shipment.

Storage Buffer:

PBS with 0.02% sodium azide and 50% glycerol pH 7.3.

Aliquoting is unnecessary for -20°C storage

*** 20ul sizes contain 0.1% BSA

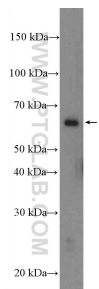
For technical support and original validation data for this product please contact:

T: 1 (888) 4PTGLAB (1-888-478-4522) (toll free in USA), or 1(312) 455-8498 (outside USA)

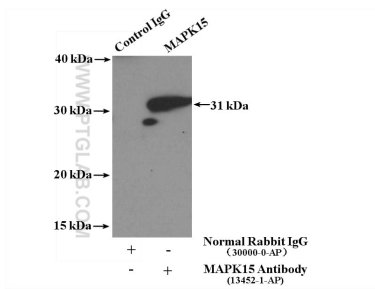
E: proteintech@ptglab.com
W: ptglab.com

This product is exclusively available under Proteintech Group brand and is not available to purchase from any other manufacturer.

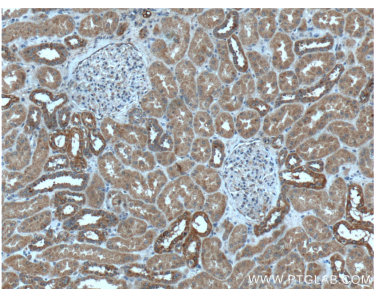
Selected Validation Data



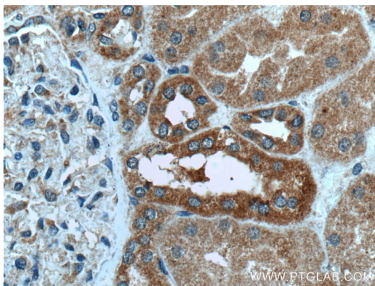
mouse lung tissue were subjected to SDS PAGE followed by western blot with 13452-1-AP (MAPK15 Antibody) at dilution of 1:1000 incubated at room temperature for 1.5 hours.



IP result of anti-MAPK15 (IP:13452-1-AP, 4ug; Detection:13452-1-AP 1:500) with mouse lung tissue lysate 3800ug.



Immunohistochemical analysis of paraffin-embedded human kidney tissue slide using 13452-1-AP (MAPK15 antibody) at dilution of 1:200 (under 10x lens).



Immunohistochemical analysis of paraffin-embedded human kidney tissue slide using 13452-1-AP (MAPK15 antibody) at dilution of 1:200 (under 40x lens).