

# CETP Polyclonal antibody

Catalog Number: 13459-1-AP

2 Publications

## Basic Information

## Catalog Number:

13459-1-AP

## Size:

150ul , Concentration: 500 µg/ml by Nanodrop;

## Source:

Rabbit

## Isotype:

IgG

## Immunogen Catalog Number:

AG3923

## GenBank Accession Number:

BC025739

## GeneID (NCBI):

1071

## UNIPROT ID:

P11597

## Full Name:

cholesteryl ester transfer protein, plasma

## Calculated MW:

493 aa, 55 kDa

## Observed MW:

50-70, 100 kDa

## Purification Method:

Antigen affinity purification

## Recommended Dilutions:

WB 1:500-1:1000

IF/ICC 1:50-1:500

## Applications

## Tested Applications:

WB, IF, ELISA

## Cited Applications:

WB, IF, IHC

## Species Specificity:

human

## Cited Species:

human

## Positive Controls:

WB : human brain tissue,

IF/ICC : HepG2 cells,

## Background Information

Cholesteryl ester transfer protein (CETP) is a plasma glycoprotein which transfers cholesteryl esters, triglycerides, and phospholipids between lipoproteins. In plasma, CETP is mainly associated with HDL particles and catalyzes the transfer of cholesteryl esters from HDL to apolipoprotein (apo) B-containing plasma lipoproteins. Low plasma concentrations of high-density lipoprotein-cholesterol (HDL-C) have long been recognized as a major, independent cardiovascular disease (CVD) risk factor. It demonstrated that altered level of plasma CETP was associated with the increased risk of CVD (PMID: 17991755, PMID: 23477743). CETP can be detected a 70 kDa isoform by glycosylation (PMID: 3281933, PMID: 22056562). It also can be detected 100 kDa dimer (PMID: 7744792).

## Notable Publications

Author	Pubmed ID	Journal	Application
Mengyang Liu	25914138	J Biol Chem	WB, IF
Zhichao Lai	38454421	J Transl Med	IHC

## Storage

## Storage:

Store at -20°C. Stable for one year after shipment.

## Storage Buffer:

PBS with 0.02% sodium azide and 50% glycerol pH 7.3.

Aliquoting is unnecessary for -20°C storage

\*\*\* 20ul sizes contain 0.1% BSA

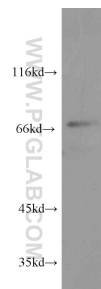
For technical support and original validation data for this product please contact:

T: 1 (888) 4PTGLAB (1-888-478-4522) (toll free in USA), or 1(312) 455-8498 (outside USA)

E: [proteintech@ptglab.com](mailto:proteintech@ptglab.com)  
W: [ptglab.com](http://ptglab.com)

This product is exclusively available under Proteintech Group brand and is not available to purchase from any other manufacturer.

## Selected Validation Data



human brain tissue were subjected to SDS PAGE followed by western blot with 13459-1-AP (CETP antibody) at dilution of 1:600 incubated at room temperature for 1.5 hours.



Immunofluorescent analysis of (-20°C Ethanol) fixed HepG2 cells using CETP antibody (13459-1-AP) at dilution of 1:200 and CoraLite®488-Conjugated AffiniPure Goat Anti-Rabbit IgG(H+L), CL594-phalloidin (red).