

For Research Use Only

SDCCAG8 Polyclonal antibody

Catalog Number: 13471-1-AP

Featured Product

11 Publications



Basic Information

Catalog Number: 13471-1-AP	GenBank Accession Number: BC032454	Purification Method: Antigen affinity purification
Size: 150ul, Concentration: 500 µg/ml by Nanodrop and 293 µg/ml by Bradford method using BSA as the standard;	GeneID (NCBI): 10806	Recommended Dilutions: IHC 1:50-1:500 IF 1:400-1:1600
Source: Rabbit	Full Name: serologically defined colon cancer antigen 8	
Isotype: IgG	Calculated MW: 713 aa, 83 kDa	
Immunogen Catalog Number: AG4264	Observed MW: 83 kDa	

Applications

Tested Applications: IF, IHC, ELISA	Positive Controls: IHC : human colon tissue, IF : HeLa cells,
Cited Applications: IF, IHC, IP, WB	
Species Specificity: human, mouse, rat, zebrafish, Canine	
Cited Species: human, mouse, rat, zebrafish	

Note-IHC: suggested antigen retrieval with TE buffer pH 9.0; (*) Alternatively, antigen retrieval may be performed with citrate buffer pH 6.0

Background Information

SDCCAG8, also named as CCCAP and NY-CO-8, plays a role in the establishment of cell polarity and epithelial lumen formation. It may play a role in ciliogenesis. Loss of SDCCAG8 function as a cause of a retinal-renal ciliopathy and validates exome capture analysis for broadly heterogeneous single-gene disorders. SDCCAG8 is localized at both centrioles and interacts directly with OFD1 (oral-facial-digital syndrome 1), which is associated with NPHP-RC. SDCCAG8 has 4 isoforms with MW 83,78,73 and 41 kDa (refer to UniProt). Catalog# 13471-1-AP can recognize all the four isoforms.

Notable Publications

Author	Pubmed ID	Journal	Application
Rannar Airik	24722439	J Am Soc Nephrol	WB, IHC, IF
Patil H H	22825473	Cell Death Dis	WB, IF
Stefanie Jäger	22190034	Nature	WB

Storage

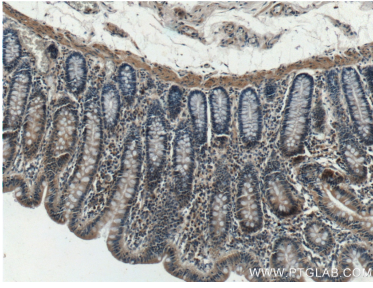
Storage:
Store at -20°C. Stable for one year after shipment.
Storage Buffer:
PBS with 0.02% sodium azide and 50% glycerol pH 7.3.
Aliquoting is unnecessary for -20°C storage

*** 20ul sizes contain 0.1% BSA

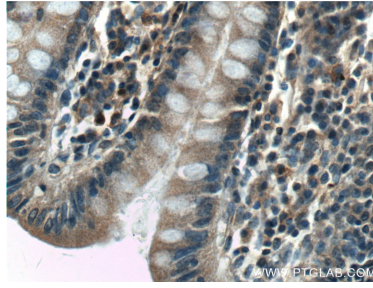
For technical support and original validation data for this product please contact:
T: 1 (888) 4PTGLAB (1-888-478-4522) (toll free in USA), or 1(312) 455-8498 (outside USA)
E: proteintech@ptglab.com
W: ptglab.com

This product is exclusively available under Proteintech Group brand and is not available to purchase from any other manufacturer.

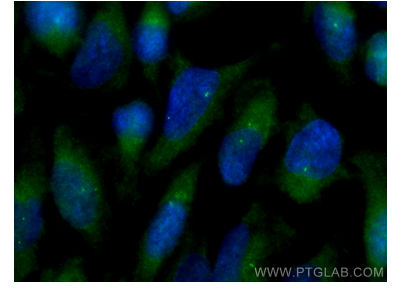
Selected Validation Data



Immunohistochemical analysis of paraffin-embedded human colon tissue slide using 13471-1-AP (SDCCAG8 Antibody) at dilution of 1:200 (under 10x lens).



Immunohistochemical analysis of paraffin-embedded human colon tissue slide using 13471-1-AP (SDCCAG8 Antibody) at dilution of 1:200 (under 40x lens).



Immunofluorescent analysis of (-20°C Methanol) fixed HeLa cells using SDCCAG8 antibody (13471-1-AP) at dilution of 1:800 and CoraLite@488-Conjugated AffiniPure Goat Anti-Rabbit IgG(H+L).