

For Research Use Only

SDCCAG8 Polyclonal antibody, PBS Only

Catalog Number: 13471-1-PBS

Featured Product



Basic Information

Catalog Number:

13471-1-PBS

Size:

100ug, Concentration: 1 mg/ml by Nanodrop;

Source:

Rabbit

Isotype:

IgG

Immunogen Catalog Number:

AG4264

GenBank Accession Number:

BC032454

GeneID (NCBI):

10806

UNIPROT ID:

Q865Q7

Full Name:

serologically defined colon cancer antigen 8

Calculated MW:

713 aa, 83 kDa

Observed MW:

83 kDa

Purification Method:

Antigen affinity purification

Applications

Tested Applications:

IHC, IF/ICC, Indirect ELISA

Species Specificity:

human, mouse, rat, canine, zebrafish

Background Information

SDCCAG8, also named as CCCAP and NY-CO-8, plays a role in the establishment of cell polarity and epithelial lumen formation. It may play a role in ciliogenesis. Loss of SDCCAG8 function as a cause of a retinal-renal ciliopathy and validates exome capture analysis for broadly heterogeneous single-gene disorders. SDCCAG8 is localized at both centrioles and interacts directly with OFD1 (oral-facial-digital syndrome 1), which is associated with NPHP-RC. SDCCAG8 has 4 isoforms with MW 83,78,73 and 41 kDa (refer to UniProt). Catalog# 13471-1-AP can recognize all the four isoforms.

Storage

Storage:

Store at -80°C.

Storage Buffer:

PBS Only

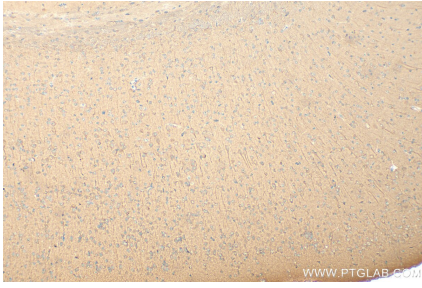
For technical support and original validation data for this product please contact:

T: 1 (888) 4PTGLAB (1-888-478-4522) (toll free in USA), or 1(312) 455-8498 (outside USA)

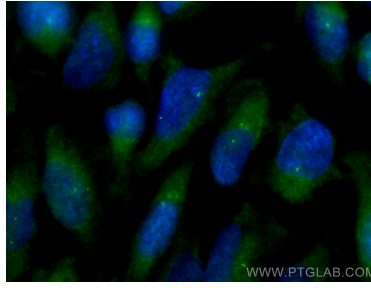
E: proteintech@ptglab.com
W: ptglab.com

This product is exclusively available under Proteintech Group brand and is not available to purchase from any other manufacturer.

Selected Validation Data



Immunohistochemical analysis of paraffin-embedded mouse brain tissue slide using 13471-1-AP (SDCCAG8 antibody) at dilution of 1:200 (under 10x lens). Heat mediated antigen retrieval with Tris-EDTA buffer (pH 9.0). This data was developed using the same antibody clone with 13471-1-PBS in a different storage buffer formulation.



Immunofluorescent analysis of (-20°C Methanol) fixed HeLa cells using SDCCAG8 antibody (13471-1-AP) at dilution of 1:800 and CoraLite® 488-Conjugated AffiniPure Goat Anti-Rabbit IgG(H+L). This data was developed using the same antibody clone with 13471-1-PBS in a different storage buffer formulation.