

For Research Use Only

HRD1/SYVN1 Polyclonal antibody

Catalog Number: 13473-1-AP

Featured Product

67 Publications



Basic Information

Catalog Number:

13473-1-AP

Size:

150ul, Concentration: 850 ug/ml by Nanodrop;

Source:

Rabbit

Isotype:

IgG

Immunogen Catalog Number:

AG4267

GenBank Accession Number:

BC030530

GeneID (NCBI):

84447

UNIPROT ID:

Q86TM6

Full Name:

synovial apoptosis inhibitor 1, synoviolin

Calculated MW:

617 aa, 68 kDa

Observed MW:

68-76 kDa

Purification Method:

Antigen affinity purification

Recommended Dilutions:

WB 1:1000-1:4000

IP 0.5-4.0 ug for 1.0-3.0 mg of total protein lysate

IHC 1:50-1:500

IF/ICC 1:50-1:500

Applications

Tested Applications:

WB, IHC, IF/ICC, IP, ELISA

Cited Applications:

WB, IHC, IF, IP, CoIP, IP-MS

Species Specificity:

human, mouse, rat

Cited Species:

human, mouse, rat

Note-IHC: suggested antigen retrieval with TE buffer pH 9.0; (*) Alternatively, antigen retrieval may be performed with citrate buffer pH 6.0

Positive Controls:

WB: HEK-293 cells, HeLa cells, HepG2 cells, MDA-MB-453s cells, mouse kidney tissue, mouse ovary tissue, mouse pancreas tissue, mouse stomach tissue, NIH/3T3 cells, Raji cells, rat stomach tissue

IP: mouse kidney tissue,

IHC: human kidney tissue,

IF/ICC: HepG2 cells,

Background Information

HRD1 is also named as SYVN1 (Synovial apoptosis inhibitor 1), KIAA1810. It acts as an E3 ubiquitin-protein ligase which accepts ubiquitin specifically from endoplasmic reticulum-associated UBC7 E2 ligase and transfers it to substrates, promoting their degradation. Two distinct binding sites mediate Hrd1 dimerization or oligomerization, one located within the transmembrane region and another within the cytosolic domain. (PMID:19864457). Western blot analysis detected abundant HRD1 expression in liver and kidney. Mouse liver and spleen expressed Hrd1 as an 85-kD protein (PMID:12646171).

Notable Publications

Author	Pubmed ID	Journal	Application
Chih-Hang Anthony Tang	32999453	Cell Mol Immunol	WB
Yu Sun	34562065	J Cell Mol Med	WB
Yu-Jie Chen	34645803	Nat Commun	WB

Storage

Storage:

Store at -20°C. Stable for one year after shipment.

Storage Buffer:

PBS with 0.02% sodium azide and 50% glycerol pH 7.3.

Aliquoting is unnecessary for -20°C storage

*** 20ul sizes contain 0.1% BSA

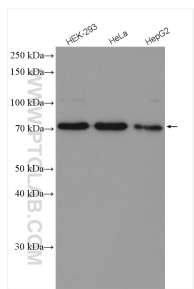
For technical support and original validation data for this product please contact:

T: 1 (888) 4PTGLAB (1-888-478-4522) (toll free in USA), or 1(312) 455-8498 (outside USA)

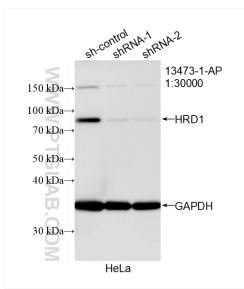
E: proteintech@ptglab.com
W: ptglab.com

This product is exclusively available under Proteintech Group brand and is not available to purchase from any other manufacturer.

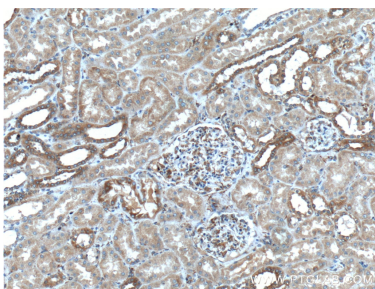
Selected Validation Data



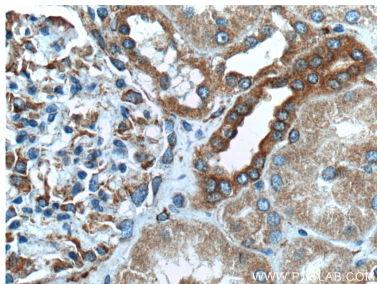
Various lysates were subjected to SDS PAGE followed by western blot with 13473-1-AP (SYVN1 antibody) at dilution of 1:2000 incubated at room temperature for 1.5 hours.



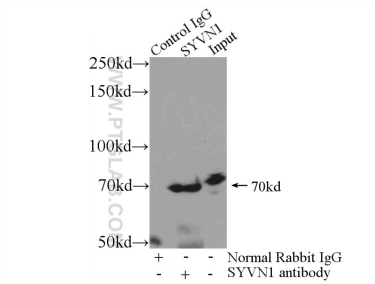
WB result of HRD1/SYVN1 antibody (13473-1-AP; 1:30000; incubated at room temperature for 1.5 hours) with sh-Control and sh-HRD1/SYVN1 transfected HeLa cells.



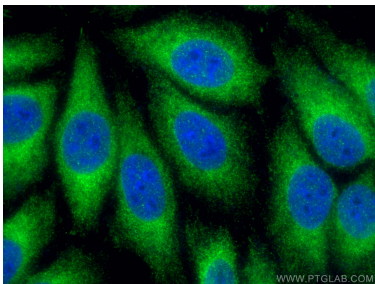
Immunohistochemical analysis of paraffin-embedded human kidney tissue slide using 13473-1-AP (SYVN1 antibody at dilution of 1:200 (under 10x lens).



Immunohistochemical analysis of paraffin-embedded human kidney tissue slide using 13473-1-AP (SYVN1 antibody at dilution of 1:200 (under 40x lens).



IP result of anti-HRD1/SYVN1 (IP:13473-1-AP, 4ug; Detection:13473-1-AP 1:1000) with mouse kidney tissue lysate 7200ug.



Immunofluorescent analysis of (-20°C Ethanol) fixed HepG2 cells using HRD1/SYVN1 antibody (13473-1-AP) at dilution of 1:200 and CoraLite®488-Conjugated Goat Anti-Rabbit IgG(H+L).