

For Research Use Only

# Cryptochrome 1 Polyclonal antibody

Catalog Number: 13474-1-AP

Featured Product

31 Publications



## Basic Information

### Catalog Number:

13474-1-AP

### Size:

150ul, Concentration: 550 ug/ml by Nanodrop;

### Source:

Rabbit

### Isotype:

IgG

### Immunogen Catalog Number:

AG4270

### GenBank Accession Number:

BC030519

### GeneID (NCBI):

1407

### UNIPROT ID:

Q16526

### Full Name:

cryptochrome 1 (photolyase-like)

### Calculated MW:

586 aa, 66 kDa

### Observed MW:

60-66 kDa

### Purification Method:

Antigen affinity purification

### Recommended Dilutions:

WB 1:1000-1:5000

IHC 1:50-1:500

IF/ICC 1:200-1:800

## Applications

### Tested Applications:

WB, IHC, IF/ICC, FC (Intra), ELISA

### Cited Applications:

WB, IF, CoIP

### Species Specificity:

human, mouse, rat

### Cited Species:

human, mouse, rat

**Note-IHC: suggested antigen retrieval with TE buffer pH 9.0; (\*) Alternatively, antigen retrieval may be performed with citrate buffer pH 6.0**

### Positive Controls:

**WB** : HeLa cells, Y79 cells, mouse liver tissue, rat liver tissue

**IHC** : mouse brain tissue, human breast cancer tissue

**IF/ICC** : HeLa cells, MCF-7 cells

## Background Information

Cryptochrome circadian clock 1 (CRY1) is a flavin adenine dinucleotide-binding protein with MW of 66 kDa. CRY1 is a key component of the circadian core oscillator complex, which regulates the circadian clock. CRY1 predominantly displays evening-time expression and serves as a strong repressor of morning-time elements (E box/E-prime box) when bound to the BMAL1 (ARNTL; 602550)/CLOCK (601851) complex (PubMed: 21236481). This antibody can recognize CRY1 and CRY2 due to the high homology.

## Notable Publications

Author	Pubmed ID	Journal	Application
Wen-Ya Huang	28986813	Chin J Integr Med	WB
Guohua Ji	31585206	Free Radic Biol Med	WB
Pieterjan Dierickx	28536247	EMBO Rep	WB

## Storage

### Storage:

Store at -20°C. Stable for one year after shipment.

### Storage Buffer:

PBS with 0.02% sodium azide and 50% glycerol pH 7.3.

Aliquoting is unnecessary for -20°C storage

\*\*\* 20ul sizes contain 0.1% BSA

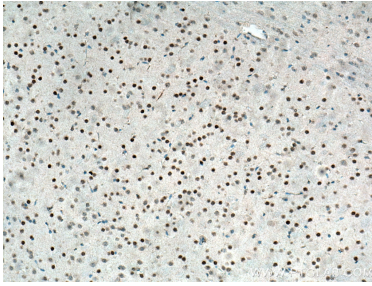
For technical support and original validation data for this product please contact:

T: 1 (888) 4PTGLAB (1-888-478-4522) (toll free in USA), or 1(312) 455-8498 (outside USA)

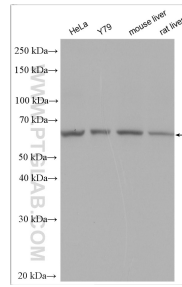
E: [proteintech@ptglab.com](mailto:proteintech@ptglab.com)  
W: [ptglab.com](http://ptglab.com)

This product is exclusively available under Proteintech Group brand and is not available to purchase from any other manufacturer.

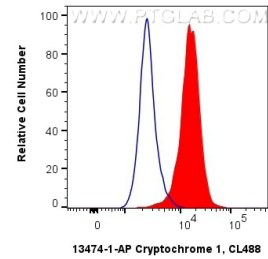
## Selected Validation Data



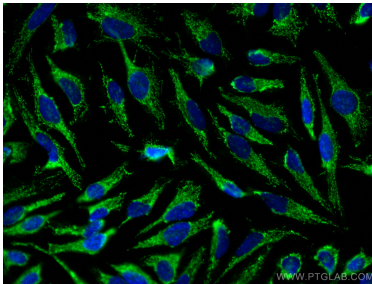
Immunohistochemical analysis of paraffin-embedded mouse brain tissue slide using 13474-1-AP (Cryptochrome 1 antibody) at dilution of 1:200 (under 10x lens). Heat mediated antigen retrieval with Tris-EDTA buffer (pH 9.0).



Various lysates were subjected to SDS PAGE followed by western blot with 13474-1-AP (Cryptochrome 1 antibody) at dilution of 1:2500 incubated at room temperature for 1.5 hours.



1X10<sup>6</sup> HeLa cells were intracellularly stained with 0.4 ug Anti-Human Cryptochrome 1 (13474-1-AP) and CoraLite®488-Conjugated AffiniPure Goat Anti-Rabbit IgG(H+L) at dilution 1:1000 (red), or 0.4 ug Rabbit IgG control Rabbit PolyAb (30000-O-AP, Clone: ) (blue). Cells were fixed with 4% PFA and permeabilized with Flow Cytometry Perm Buffer (PF00011-C).



Immunofluorescent analysis of (-20°C Methanol) fixed HeLa cells using Cryptochrome 1 antibody (13474-1-AP) at dilution of 1:400 and CoraLite®488-Conjugated AffiniPure Goat Anti-Rabbit IgG(H+L).