

For Research Use Only

# Cryptochrome 1 Polyclonal antibody, PBS Only

Catalog Number: 13474-1-PBS

Featured Product



## Basic Information

**Catalog Number:**

13474-1-PBS

**Size:**

100ug, Concentration: 1 mg/ml by  
Nanodrop;

**Source:**

Rabbit

**Isotype:**

IgG

**Immunogen Catalog Number:**

AG4270

**GenBank Accession Number:**

BC030519

**GeneID (NCBI):**

1407

**UNIPROT ID:**

Q16526

**Full Name:**

cryptochrome 1 (photolyase-like)

**Calculated MW:**

586 aa, 66 kDa

**Observed MW:**

60-66 kDa

**Purification Method:**

Antigen affinity purification

## Applications

**Tested Applications:**

WB, IHC, IF/ICC, FC (Intra), Indirect ELISA

**Species Specificity:**

human, mouse, rat

## Background Information

Cryptochrome circadian clock 1 (CRY1) is a flavin adenine dinucleotide-binding protein with MW of 66 kDa. CRY1 is a key component of the circadian core oscillator complex, which regulates the circadian clock. CRY1 predominantly displays evening-time expression and serves as a strong repressor of morning-time elements (E box/E-prime box) when bound to the BMAL1 (ARNTL; 602550)/CLOCK (601851) complex (PubMed: 21236481). This antibody can recognize CRY1 and CRY2 due to the high homology.

## Storage

**Storage:**

Store at -80°C.

**Storage Buffer:**

PBS only, pH7.3

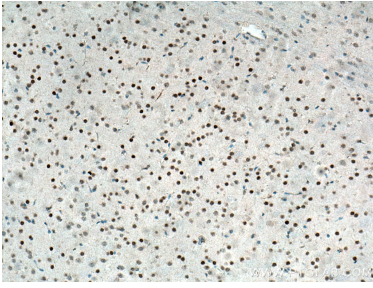
For technical support and original validation data for this product please contact:

T: 1 (888) 4PTGLAB (1-888-478-4522) (toll free  
in USA), or 1(312) 455-8498 (outside USA)

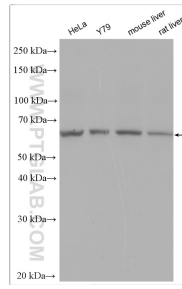
E: [proteintech@ptglab.com](mailto:proteintech@ptglab.com)  
W: [ptglab.com](http://ptglab.com)

**This product is exclusively available under Proteintech Group brand and is not available to purchase from any other manufacturer.**

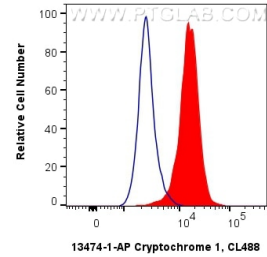
## Selected Validation Data



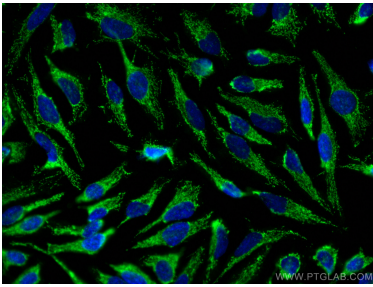
Immunohistochemical analysis of paraffin-embedded mouse brain tissue slide using 13474-1-AP (Cryptochrome 1 antibody) at dilution of 1:200 (under 10x lens). Heat mediated antigen retrieval with Tris-EDTA buffer (pH 9.0). This data was developed using the same antibody clone with 13474-1-PBS in a different storage buffer formulation.



Various lysates were subjected to SDS PAGE followed by western blot with 13474-1-AP (Cryptochrome 1 antibody) at dilution of 1:2500 incubated at room temperature for 1.5 hours. This data was developed using the same antibody clone with 13474-1-PBS in a different storage buffer formulation.



$1 \times 10^6$  HeLa cells were intracellularly stained with 0.4 ug Anti-Human Cryptochrome 1 (13474-1-AP) and CoraLite®488-Conjugated AffiniPure Goat Anti-Rabbit IgG(H+L) at dilution 1:1000 (red), or 0.4 ug rabbit IgG isotype control (blue). Cells were fixed with 4% PFA and permeabilized with Flow Cytometry Perm Buffer. This data was developed using the same antibody clone with 13474-1-PBS in a different storage buffer formulation.



Immunofluorescent analysis of (-20°C Methanol) fixed HeLa cells using Cryptochrome 1 antibody (13474-1-AP) at dilution of 1:400 and CoraLite®488-Conjugated AffiniPure Goat Anti-Rabbit IgG(H+L). This data was developed using the same antibody clone with 13474-1-PBS in a different storage buffer formulation.