

For Research Use Only

EVL Polyclonal antibody

Catalog Number: 13484-1-AP

3 Publications



Basic Information

Catalog Number:

13484-1-AP

Size:

150ul , Concentration: 1000 ug/ml by Nanodrop and 627 ug/ml by Bradford method using BSA as the standard;

Source:

Rabbit

Isotype:

IgG

Immunogen Catalog Number:

AG4302

GenBank Accession Number:

BC032358

GeneID (NCBI):

51466

UNIPROT ID:

Q9UI08

Full Name:

Enah/Vasp-Like

Calculated MW:

418 aa, 45 kDa

Observed MW:

50 kDa

Purification Method:

Antigen affinity purification

Recommended Dilutions:

WB 1:200-1:1000

IHC 1:200-1:800

Applications

Tested Applications:

WB, IHC, ELISA

Cited Applications:

WB, IHC, IF

Species Specificity:

human

Cited Species:

human, mouse

Positive Controls:

WB : Jurkat cells,

IHC : human small intestine tissue, human lung tissue

Note-IHC: suggested antigen retrieval with TE buffer pH 9.0; (*) Alternatively, antigen retrieval may be performed with citrate buffer pH 6.0

Background Information

EVL (Ena/VASP-like protein) is implicated in processes that requires dynamic actin remodeling such as axon guidance and platelet activation. It has two isoforms, EVL and EVL-I, that are highly expressed in hematopoietic cells of thymus and spleen, and both isoforms can be phosphorylated by PKA in vitro (PMID10945997).

Notable Publications

Author	Pubmed ID	Journal	Application
Yue Lu	39487253	Nat Cell Biol	IF
Wei-Jian Ni	37537731	Clin Transl Med	IHC
Yan Du	36983615	J Pers Med	WB

Storage

Storage:

Store at -20°C. Stable for one year after shipment.

Storage Buffer:

PBS with 0.02% sodium azide and 50% glycerol pH 7.3.

Aliquoting is unnecessary for -20°C storage

*** 20ul sizes contain 0.1% BSA

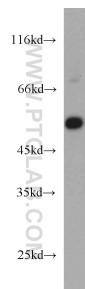
For technical support and original validation data for this product please contact:

T: 1 (888) 4PTGLAB (1-888-478-4522) (toll free in USA), or 1(312) 455-8498 (outside USA)

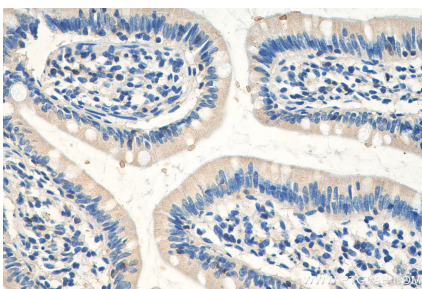
E: proteintech@ptglab.com
W: ptglab.com

This product is exclusively available under Proteintech Group brand and is not available to purchase from any other manufacturer.

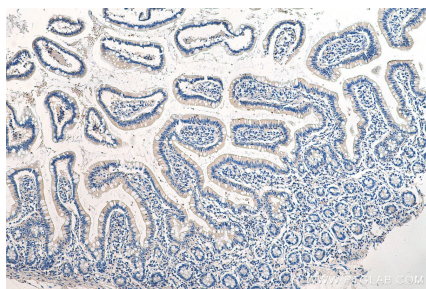
Selected Validation Data



Jurkat cells were subjected to SDS PAGE followed by western blot with 13484-1-AP (EVL antibody) at dilution of 1:200 incubated at room temperature for 1.5 hours.



Immunohistochemical analysis of paraffin-embedded human small intestine tissue slide using 13484-1-AP (EVL antibody) at dilution of 1:400 (under 40x lens). Heat mediated antigen retrieval with Tris-EDTA buffer (pH 9.0).



Immunohistochemical analysis of paraffin-embedded human small intestine tissue slide using 13484-1-AP (EVL antibody) at dilution of 1:400 (under 10x lens). Heat mediated antigen retrieval with Tris-EDTA buffer (pH 9.0).