

For Research Use Only

MTMR4 Polyclonal antibody, PBS Only

Catalog Number: 13488-1-PBS

Featured Product



Basic Information

Catalog Number:

13488-1-PBS

Size:

100ug, Concentration: 1 mg/ml by Nanodrop;

Source:

Rabbit

Isotype:

IgG

Immunogen Catalog Number:

AG4310

GenBank Accession Number:

BC035609

GeneID (NCBI):

9110

UNIPROT ID:

Q9NYA4

Full Name:

myotubularin related protein 4

Calculated MW:

1195 aa, 133 kDa

Observed MW:

133-150 kDa

Purification Method:

Antigen affinity purification

Applications

Tested Applications:

WB, IHC, IF/ICC, Indirect ELISA

Species Specificity:

human, mouse, rat

Background Information

Myotubularin-related protein-4 (MTMR4), also named FYVE-DSP2, is a member of the myotubularin family of phosphoinositide phosphatases that selectively degrade the 3-position phosphate from the inositol ring of PtdIns(3)P and phosphatidylinositol 3,5-bisphosphate (PtdIns(3,5)P₂) (PMID: 31543504). MTMR4 knockdown markedly suppressed the motility, fusion, and fission of PI(3)P- enriched structures, resulting in decreases in late endosomes, autophagosomes, and lysosomes, and enlargement of PI(3)P- enriched early and late endosomes (PMID: 29962048).

Storage

Storage:

Store at -80°C.

Storage Buffer:

PBS only, pH7.3

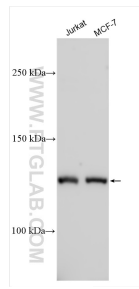
For technical support and original validation data for this product please contact:

T: 1 (888) 4PTGLAB (1-888-478-4522) (toll free in USA), or 1(312) 455-8498 (outside USA)

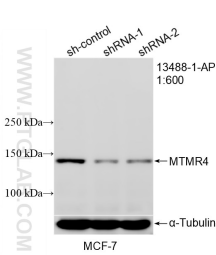
E: proteintech@ptglab.com
W: ptglab.com

This product is exclusively available under Proteintech Group brand and is not available to purchase from any other manufacturer.

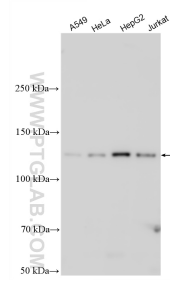
Selected Validation Data



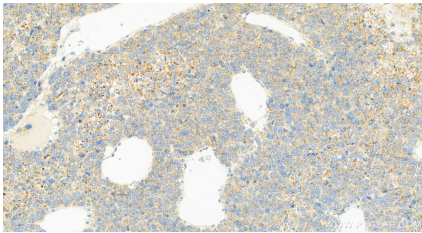
Various lysates were subjected to SDS PAGE followed by western blot with 13488-1-AP (MTMR4 antibody) at dilution of 1:2000 incubated at room temperature for 1.5 hours. This data was developed using the same antibody clone with 13488-1-PBS in a different storage buffer formulation.



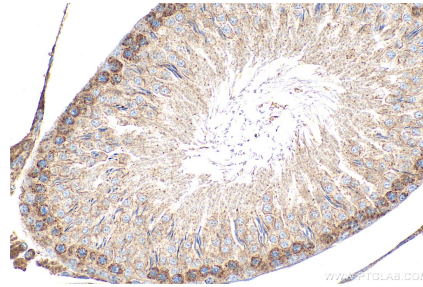
WB result of MTMR4 antibody (13488-1-AP; 1:600; incubated at room temperature for 1.5 hours) with sh-Control and sh-MTMR4 transfected MCF-7 cells. This data was developed using the same antibody clone with 13488-1-PBS in a different storage buffer formulation.



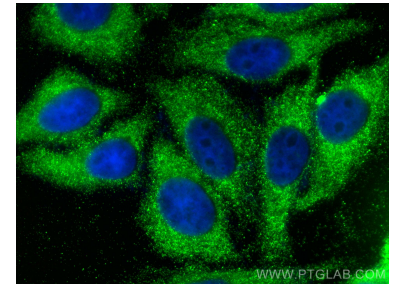
Various lysates were subjected to SDS PAGE followed by western blot with 13488-1-AP (MTMR4 antibody) at dilution of 1:1000 incubated at room temperature for 1.5 hours. This data was developed using the same antibody clone with 13488-1-PBS in a different storage buffer formulation.



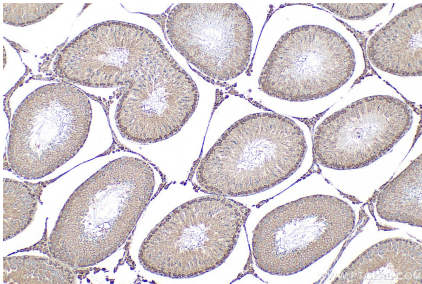
Immunohistochemical analysis of paraffin-embedded hepatocellular carcinoma tissue slide using 13488-1-AP (MTMR4 antibody) at dilution of 1:1000 (under 20x lens). Heat mediated antigen retrieval with Tris-EDTA buffer (pH 9.0). This data was developed using the same antibody clone with 13488-1-PBS in a different storage buffer formulation.



Immunohistochemical analysis of paraffin-embedded rat testis tissue slide using 13488-1-AP (MTMR4 antibody) at dilution of 1:500 (under 40x lens). Heat mediated antigen retrieval with Tris-EDTA buffer (pH 9.0). This data was developed using the same antibody clone with 13488-1-PBS in a different storage buffer formulation.



Immunofluorescent analysis of (-20°C Ethanol) fixed HepG2 cells using MTMR4 antibody (13488-1-AP) at dilution of 1:200 and CoraLite®488-Conjugated AffiniPure Goat Anti-Rabbit IgG(H+L). This data was developed using the same antibody clone with 13488-1-PBS in a different storage buffer formulation.



Immunohistochemical analysis of paraffin-embedded rat testis tissue slide using 13488-1-AP (MTMR4 antibody) at dilution of 1:500 (under 10x lens). Heat mediated antigen retrieval with Tris-EDTA buffer (pH 9.0). This data was developed using the same antibody clone with 13488-1-PBS in a different storage buffer formulation.