

For Research Use Only

GP2 Polyclonal antibody

Catalog Number: 13493-1-AP



Basic Information

Catalog Number: 13493-1-AP	GenBank Accession Number: BC032693	Purification Method: Antigen affinity purification
Size: 150ul , Concentration: 600 ug/ml by Nanodrop;	GeneID (NCBI): 2813	Recommended Dilutions: WB 1:1000-1:4000
Source: Rabbit	UNIPROT ID: P55259	
Isotype: IgG	Full Name: glycoprotein 2 (zymogen granule membrane)	
Immunogen Catalog Number: AG4317	Calculated MW: 530 aa, 58 kDa	
	Observed MW: 75-85 kDa	

Applications

Tested Applications: WB, ELISA	Positive Controls: WB : rat pancreas tissue, mouse pancreas tissue
Species Specificity: human, mouse, rat	

Background Information

Pancreatic secretory granule membrane major glycoprotein (GP2) is the most abundant membrane component of zymogen granules secreted by pancreatic acinar cells (PMID: 8190715). GP2 associates with the plasma membrane via glycosylphosphatidylinositol (GPI) linkage. It is released from the membrane of mature zymogen granules by an enzymatic mechanism (PMID: 2011597). GP2 plays a role in defense against adhesive and invasive commensal bacteria during intestinal inflammation (PMID: 33594081). GP2 is preferentially expressed in acinar cell carcinomas of the pancreas but the glycoprotein can rarely also be expressed in a variety of other tumor entities (PMID: 36137400). The apparent molecular weight of GP2 is 70-100 kDa, which is larger than the calculated molecular weight, due to glycosylation (PMID: 19627615; 30186250).

Storage

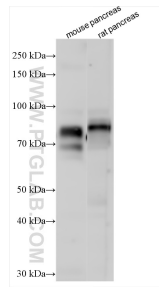
Storage:
Store at -20°C. Stable for one year after shipment.
Storage Buffer:
PBS with 0.02% sodium azide and 50% glycerol pH 7.3.
Aliquoting is unnecessary for -20°C storage

*** 20ul sizes contain 0.1% BSA

For technical support and original validation data for this product please contact:
T: 1 (888) 4PTGLAB (1-888-478-4522) (toll free in USA), or 1(312) 455-8498 (outside USA)
E: proteintech@ptglab.com
W: ptglab.com

This product is exclusively available under Proteintech Group brand and is not available to purchase from any other manufacturer.

Selected Validation Data



Various lysates were subjected to SDS PAGE followed by western blot with 13493-1-AP (GP2 antibody) at dilution of 1:2000 incubated at room temperature for 1.5 hours.