

For Research Use Only

# OTX2 Polyclonal antibody, PBS Only

Catalog Number: 13497-1-PBS

Featured Product



## Basic Information

### Catalog Number:

13497-1-PBS

### Size:

100ug, Concentration: 1 mg/ml by Nanodrop;

### Source:

Rabbit

### Isotype:

IgG

### Immunogen Catalog Number:

AG4323

### GenBank Accession Number:

BC032579

### GeneID (NCBI):

5015

### UNIPROT ID:

P32243

### Full Name:

orthodenticle homeobox 2

### Calculated MW:

297 aa, 32 kDa

### Observed MW:

31-35 kDa

### Purification Method:

Antigen affinity purification

## Applications

### Tested Applications:

WB, IHC, FC (Intra), IP, Indirect ELISA

### Species Specificity:

human, mouse, rat

## Background Information

The orthodenticle homeobox 2, encoded by OTX2 gene, is a key transcription factor in developmental processes. In particular, it is required for the early specification of the brain and the embryonic development of sensory organs, including the, pineal gland, pituitary gland, inner part of the ear, eyes, and optic nerve. In later stages, it is important for maintaining intact retina and brain function. In addition, it acts as a transcriptional repressor and a gatekeeper of myogenic and neuronal differentiation in medulloblastoma cells. OTX2 binds to the MyoD1 core enhancer through its homeobox domain and the remarkable repressor activity exhibited by the homeobox domain renders OTX2 transcriptionally repressive

## Storage

### Storage:

Store at -80°C.

### Storage Buffer:

PBS Only

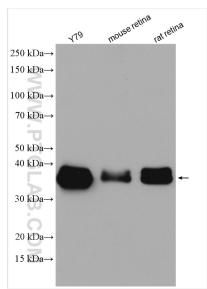
For technical support and original validation data for this product please contact:

T: 1 (888) 4PTGLAB (1-888-478-4522) (toll free in USA), or 1(312) 455-8498 (outside USA)

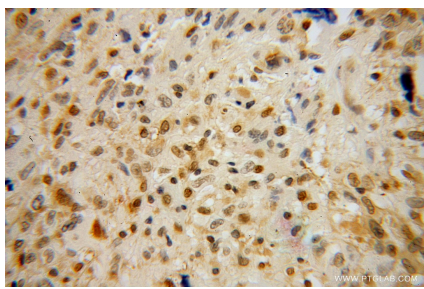
E: [proteintech@ptglab.com](mailto:proteintech@ptglab.com)  
W: [ptglab.com](http://ptglab.com)

This product is exclusively available under Proteintech Group brand and is not available to purchase from any other manufacturer.

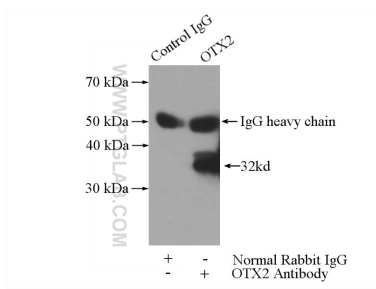
## Selected Validation Data



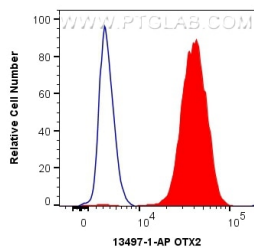
Various lysates were subjected to SDS PAGE followed by western blot with 13497-1-AP (OTX2 antibody) at dilution of 1:8000 incubated at room temperature for 1.5 hours. This data was developed using the same antibody clone with 13497-1-PBS in a different storage buffer formulation.



Immunohistochemical analysis of paraffin-embedded human gliomas using 13497-1-AP (OTX2 antibody) at dilution of 1:100 (under 40x lens). This data was developed using the same antibody clone with 13497-1-PBS in a different storage buffer formulation.



IP result of anti-OTX2 (IP:13497-1-AP, 3ug; Detection:13497-1-AP 1:1500) with Y79 cells lysate 2400ug. This data was developed using the same antibody clone with 13497-1-PBS in a different storage buffer formulation.



1X10<sup>6</sup> HepG2 cells were intracellularly stained with 0.4 ug Anti-Human OTX2 (13497-1-AP) and CoraLite®488-Conjugated AffiniPure Goat Anti-Rabbit IgG(H+L) at dilution 1:1000 (red), or 0.4 ug Isotype Control. Cells were fixed and permeabilized with Transcription Factor Staining Buffer Kit (PF00011). This data was developed using the same antibody clone with 13497-1-PBS in a different storage buffer formulation.