

For Research Use Only

RUFY1 Polyclonal antibody

Catalog Number: 13498-1-AP

5 Publications



Basic Information

Catalog Number:

13498-1-AP

Size:

150ul, Concentration: 550 ug/ml by Nanodrop and 307 ug/ml by Bradford method using BSA as the standard;

Source:

Rabbit

Isotype:

IgG

Immunogen Catalog Number:

AG4324

GenBank Accession Number:

BC032571

GeneID (NCBI):

80230

UNIPROT ID:

Q96T51

Full Name:

RUN and FYVE domain containing 1

Calculated MW:

708 aa, 80 kDa

Observed MW:

69 kDa, 80 kDa

Purification Method:

Antigen affinity purification

Recommended Dilutions:

WB 1:1000-1:4000

IF/ICC 1:20-1:200

Applications

Tested Applications:

WB, IF/ICC, IP, ELISA

Cited Applications:

WB, CoIP, IF

Species Specificity:

human, mouse, rat

Cited Species:

human, mouse

Positive Controls:

WB : HeLa cells,

IF/ICC : HeLa cells,

Background Information

Rab proteins form the largest group within the Ras superfamily of small GTPases, which acts as molecular switches by cycling between their inactive active GTP-bound and GDP-bound forms [PMID:15520808]. The small GTP-binding protein Rab4 has been involved in the recycling of $\alpha v \beta 3$ integrins in response to platelet-derived growth factor (PDGF) stimulation suggesting a role for Rab4 in cell adhesion and migration [PMID:17001082]. Rabip4 (Rab4 interacting protein), which possesses a RUN domain, two coiled-coil domains and a FYVE finger, was identified as an effector of Rab4, a small GTPase that plays a role in the endocytotic pathway in all cell types [PMID:11172003]. RUFY1 exists three isoforms and molecular weight of isoforms are 80 kDa, 69 kDa and 45 kDa.

Notable Publications

Author	Pubmed ID	Journal	Application
Meng Shi	30478271	Nat Commun	IF
Christine A Phillips-Krawczak	25355947	Mol Biol Cell	WB, IF
Qiaoming Zhi	30407695	Cancer Sci	CoIP

Storage

Storage:

Store at -20°C. Stable for one year after shipment.

Storage Buffer:

PBS with 0.02% sodium azide and 50% glycerol pH 7.3.

Aliquoting is unnecessary for -20°C storage

*** 20ul sizes contain 0.1% BSA

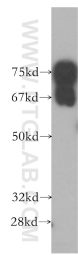
For technical support and original validation data for this product please contact:

T: 1 (888) 4PTGLAB (1-888-478-4522) (toll free in USA), or 1(312) 455-8498 (outside USA)

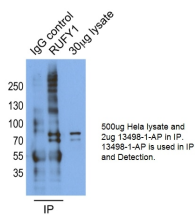
E: proteintech@ptglab.com
W: ptglab.com

This product is exclusively available under Proteintech Group brand and is not available to purchase from any other manufacturer.

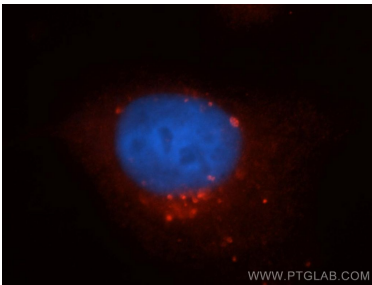
Selected Validation Data



HeLa cells were subjected to SDS PAGE followed by western blot with 13498-1-AP (RUFY1 antibody) at dilution of 1:1000 incubated at room temperature for 1.5 hours.



IP result of anti-RUFY1 (13498-1-AP for IP and Detection).



Immunofluorescent analysis of HeLa cells, using RUFY1 antibody 13498-1-AP at 1:50 dilution and Rhodamine-labeled goat anti-rabbit IgG (red). Blue pseudocolor = DAPI (fluorescent DNA dye).