

For Research Use Only

REX1 Polyclonal antibody

Catalog Number: 13503-1-AP



Basic Information

Catalog Number: 13503-1-AP	GenBank Accession Number: BC032244	Purification Method: Antigen affinity purification
Size: 150ul , Concentration: 300 ug/ml by Nanodrop and 173 ug/ml by Bradford method using BSA as the standard;	GeneID (NCBI): 57455	Recommended Dilutions: IF/ICC 1:20-1:200
Source: Rabbit	UNIPROT ID: Q8N1G1	
Isotype: IgG	Full Name: REX1, RNA exonuclease 1 homolog (S. cerevisiae)	
Immunogen Catalog Number: AG4334	Calculated MW: 1221 aa, 132 kDa	
	Observed MW: 132 kDa	

Applications

Tested Applications: IF/ICC, ELISA	Positive Controls: IF/ICC : human embryonic stem cells,
Species Specificity: human	

Background Information

REXO1, also named as EloA-BP1, ELOABP1, KIAA1138 and TCEB3BP1, is transcription elongation factor B polypeptide 3-binding protein 1. REXO1 did not affect either the rate of transcription elongation by RNA polymerase II or the transcriptional activity of TCEB3 in vitro. This gene is different to the REX1 which is an embryo stem cell marker.

Storage

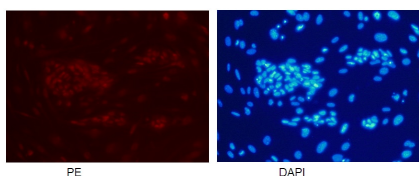
Storage:
Store at -20°C. Stable for one year after shipment.
Storage Buffer:
PBS with 0.02% sodium azide and 50% glycerol pH 7.3.
Aliquoting is unnecessary for -20°C storage

*** 20ul sizes contain 0.1% BSA

For technical support and original validation data for this product please contact:
T: 1 (888) 4PTGLAB (1-888-478-4522) (toll free in USA), or 1(312) 455-8498 (outside USA)
E: proteintech@ptglab.com
W: ptglab.com

This product is exclusively available under Proteintech Group brand and is not available to purchase from any other manufacturer.

Selected Validation Data



PE DAPI
Confocal immunofluorescent analysis of human embryonic stem cells with 13503-1-AP at dilution of 1:50. The PE shows staining with 13503-1-AP/PE. The DAPI shows nuclear staining by DAPI. (20X)

Confocal immunofluorescent analysis of human embryonic stem cells with 13503-1-AP at dilution of 1:50. The PE shows staining with 13503-1-AP/PE. The DAPI shows nuclear staining by DAPI. (20X).