

MTPN Polyclonal antibody

Catalog Number: 13508-1-AP

2 Publications

Basic Information

Catalog Number: 13508-1-AP	GenBank Accession Number: BC028093	Purification Method: Antigen affinity purification
Size: 150ul , Concentration: 850 µg/ml by Nanodrop and 447 µg/ml by Bradford method using BSA as the standard;	GeneID (NCBI): 136319	Recommended Dilutions: WB 1:500-1:1000 IHC 1:20-1:200 IF 1:10-1:100
Source: Rabbit	Full Name: myotrophin	
Isotype: IgG	Calculated MW: 118 aa, 13 kDa	
Immunogen Catalog Number: AG4419	Observed MW: 12 kDa	

Applications

Tested Applications: IF, IHC, WB, ELISA	Positive Controls:
Cited Applications: IHC	WB : HEK-293T cells, human brain tissue, HeLa cells, Jurkat cells
Species Specificity: human, mouse, rat	IHC : human cerebellum tissue, human heart tissue
Cited Species: human	IF : HepG2 cells, Hela cells

Note-IHC: suggested antigen retrieval with TE buffer pH 9.0; (*) Alternatively, antigen retrieval may be performed with citrate buffer pH 6.0

Background Information

Myotrophin (MTPN) is a ubiquitously expressed 12 kDa cytoplasmic protein that was first isolated from the hearts of spontaneously hypertensive rats. Protein sequence analysis revealed that MTPN was composed of 118 amino acids and was occupied by two and a half internal 33 amino acid ankyrin repeats. MTPN stimulates protein synthesis and increases the expression of a number of cardiac marker genes (such as atrial natriuretic factor and b-myosin heavy chain) in cardiomyocytes leading to hypertrophy. In skeletal muscle, MTPN is also a positive growth factor in promoting skeletal muscle growth.

Notable Publications

Author	Pubmed ID	Journal	Application
Masataka Nomoto	34857990	J Clin Biochem Nutr	IHC
Roni Levy	12015537	Am J Obstet Gynecol	IHC

Storage

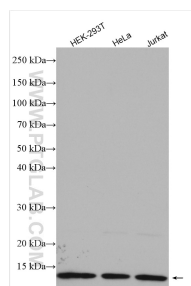
Storage:
Store at -20°C. Stable for one year after shipment.
Storage Buffer:
PBS with 0.02% sodium azide and 50% glycerol pH 7.3.
Aliquoting is unnecessary for -20°C storage

*** 20ul sizes contain 0.1% BSA

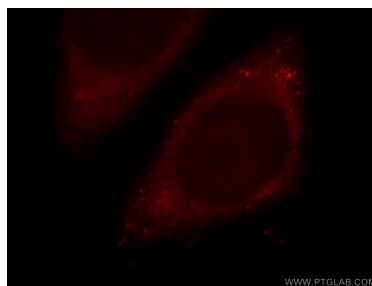
For technical support and original validation data for this product please contact:
T: 1 (888) 4PTGLAB (1-888-478-4522) (toll free in USA), or 1(312) 455-8498 (outside USA)
E: proteintech@ptglab.com
W: ptglab.com

This product is exclusively available under Proteintech Group brand and is not available to purchase from any other manufacturer.

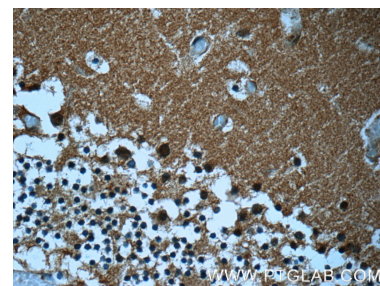
Selected Validation Data



Various lysates were subjected to SDS PAGE followed by western blot with 13508-1-AP (MTPN antibody) at dilution of 1:500 incubated at room temperature for 1.5 hours.



Immunofluorescent analysis of HepG2 cells, using MTPN antibody 13508-1-AP at 1:25 dilution and Rhodamine-labeled goat anti-rabbit IgG (red).



Immunohistochemical analysis of paraffin-embedded human cerebellum tissue slide using 13508-1-AP (MTPN Antibody) at dilution of 1:50 (under 40x lens).