

For Research Use Only

# MARVELD2 Polyclonal antibody

Catalog Number: 13515-1-AP

5 Publications



## Basic Information

### Catalog Number:

13515-1-AP

### Size:

150ul, Concentration: 1000 ug/ml by Nanodrop and 647 ug/ml by Bradford method using BSA as the standard;

### Source:

Rabbit

### Isotype:

IgG

### Immunogen Catalog Number:

AG4446

### GenBank Accession Number:

BC033689

### GeneID (NCBI):

153562

### UNIPROT ID:

Q8N4S9

### Full Name:

MARVEL domain containing 2

### Calculated MW:

558 aa, 64 kDa

### Observed MW:

64 kDa

### Purification Method:

Antigen affinity purification

### Recommended Dilutions:

WB 1:5000-1:50000

IHC 1:50-1:500

## Applications

### Tested Applications:

WB, IHC, ELISA

### Cited Applications:

WB, IF, IHC

### Species Specificity:

human, mouse, rat

### Cited Species:

human, mouse, pig

**Note-IHC: suggested antigen retrieval with TE buffer pH 9.0; (\*) Alternatively, antigen retrieval may be performed with citrate buffer pH 6.0**

### Positive Controls:

**WB** : HEK-293 cells, HeLa cells, mouse kidney tissue, rat kidney tissue

**IHC** : human small intestine tissue, human stomach tissue

## Background Information

MARVELD2, also named as Tricellulin or TRIC, is a 558 amino acid protein, which contains one MARVEL domain. MARVELD2 localizes the cell membrane and plays a role in the formation of the epithelial barriers. MARVELD2, is a first integral membrane protein that is concentrated at the vertically oriented tight junction strands of tricellular contacts. MARVELD2 may be a component to maintain the integrity for peripheral nervous system myelin function and morphology.

## Notable Publications

Author	Pubmed ID	Journal	Application
David F. Russell	36395118	PLoS One	IF
David F Russell	35987072	Tissue Cell	IF
Zhe-Wei Zhang	35150869	Microb Pathog	WB,IHC

## Storage

### Storage:

Store at -20°C. Stable for one year after shipment.

### Storage Buffer:

PBS with 0.02% sodium azide and 50% glycerol pH 7.3.

Aliquoting is unnecessary for -20°C storage

\*\*\* 20ul sizes contain 0.1% BSA

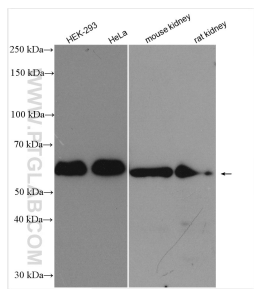
For technical support and original validation data for this product please contact:

T: 1 (888) 4PTGLAB (1-888-478-4522) (toll free in USA), or 1(312) 455-8498 (outside USA)

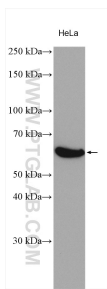
E: [proteintech@ptglab.com](mailto:proteintech@ptglab.com)  
W: [ptglab.com](http://ptglab.com)

This product is exclusively available under Proteintech Group brand and is not available to purchase from any other manufacturer.

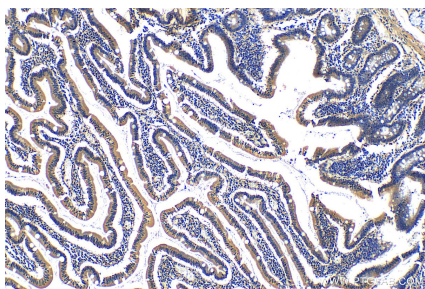
## Selected Validation Data



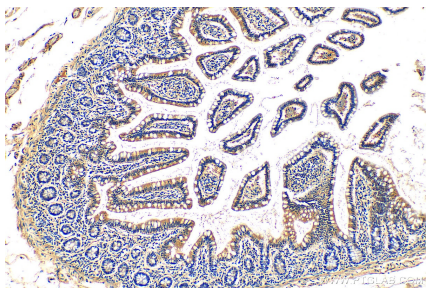
Various lysates were subjected to SDS PAGE followed by western blot with 13515-1-AP (MARVELD2 antibody) at dilution of 1:10000 incubated at room temperature for 1.5 hours.



Hela cell lysates were subjected to SDS PAGE followed by western blot with 13515-1-AP (MARVELD2 antibody) at dilution of 1:1000 incubated at room temperature for 1.5 hours.



Immunohistochemical analysis of paraffin-embedded human stomach tissue slide using 13515-1-AP (MARVELD2 antibody) at dilution of 1:200 (under 10x lens). Heat mediated antigen retrieval with Tris-EDTA buffer (pH 9.0).



Immunohistochemical analysis of paraffin-embedded human small intestine tissue slide using 13515-1-AP (MARVELD2 antibody) at dilution of 1:200 (under 10x lens). Heat mediated antigen retrieval with Tris-EDTA buffer (pH 9.0).