

For Research Use Only

Glypican 2 Polyclonal antibody

Catalog Number: 13521-1-AP



Basic Information

Catalog Number: 13521-1-AP	GenBank Accession Number: BC027972	Purification Method: Antigen affinity purification
Size: 150ul , Concentration: 900 µg/ml by Nanodrop;	GeneID (NCBI): 221914	Recommended Dilutions: WB 1:500-1:3000
Source: Rabbit	Full Name: glypican 2	
Isotype: IgG	Calculated MW: 579 aa, 63 kDa	
Immunogen Catalog Number: AG4041	Observed MW: 62 70-100 kDa	

Applications

Tested Applications: WB, ELISA	Positive Controls: WB : SH-SY5Y cells, T-47D cells, mouse spleen tissue, mouse testis tissue
Species Specificity: human, mouse	

Background Information

Glypican 2 (GPC2) is a heparan sulfate proteoglycan that is linked to the outer leaflet of the plasma membrane via a glycosylphosphatidylinositol (GPI) linkage (PMID: 18505598). It is expected to be located in cell membrane and highly overexpressed in a high percentage of human neuroblastomas, medulloblastomas, and retinoblastomas. The calculated molecular weight of GPC2 is 62 kDa. And other bands are the result of glycosylation modification. Recent studies demonstrate that expression of the GPC2 protein is significantly increased in neuroblastoma and undetectable in normal tissues, including brain, heart, lung, and kidney, indicating that GPC2 is a suitable tumor antigen in neuroblastoma (PMID: 30352677).

Storage

Storage:
Store at -20°C. Stable for one year after shipment.
Storage Buffer:
PBS with 0.02% sodium azide and 50% glycerol pH 7.3.
Aliquoting is unnecessary for -20°C storage

*** 20ul sizes contain 0.1% BSA

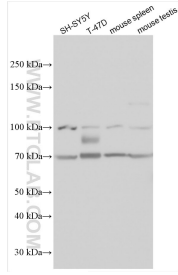
For technical support and original validation data for this product please contact:

T: 1 (888) 4PTGLAB (1-888-478-4522) (toll free in USA), or 1(312) 455-8498 (outside USA)

E: proteintech@ptglab.com
W: ptglab.com

This product is exclusively available under Proteintech Group brand and is not available to purchase from any other manufacturer.

Selected Validation Data



Various lysates were subjected to SDS PAGE followed by western blot with 13521-1-AP (Glypican 2 antibody) at dilution of 1:1500 incubated at room temperature for 1.5 hours.