

For Research Use Only

Nidogen 2 Polyclonal antibody

Catalog Number: 13530-1-AP **1 Publications**



Basic Information

Catalog Number: 13530-1-AP	GenBank Accession Number: BC035608	Purification Method: Antigen affinity purification
Size: 150ul , Concentration: 300 µg/ml by Nanodrop and 173 µg/ml by Bradford method using BSA as the standard;	GeneID (NCBI): 22795	Recommended Dilutions: WB 1:500-1:2000 IHC 1:20-1:200
Source: Rabbit	Full Name: nidogen 2 (osteonidogen)	
Isotype: IgG	Calculated MW: 1375 aa, 151 kDa	
Immunogen Catalog Number: AG4424	Observed MW: 200 kDa	

Applications

Tested Applications: IHC, WB, ELISA	Positive Controls:
Cited Applications: IHC	WB: mouse heart tissue, human heart tissue, human placenta tissue, mouse skeletal muscle tissue
Species Specificity: human, mouse, rat	IHC: human kidney tissue, mouse skeletal muscle tissue, mouse kidney tissue
Cited Species: human	
Note-IHC: suggested antigen retrieval with TE buffer pH 9.0; (*) Alternatively, antigen retrieval may be performed with citrate buffer pH 6.0	

Background Information

Nidogen, also referred to as entactin, represents a highly conserved protein in vertebrates and invertebrates and is found in almost all basement membranes (BM). Nidogen-1 (150 kDa) and nidogen-2 (200 kDa) are elongated molecules composed of three globular domains (G1, G2, and G3) connected by a flexible, protease-sensitive link and a rigid rod-like domain. Western blot analysis of protein extracts of heart, lung, and skeletal muscle of mice, major bands of about 200 kDa were detected, accompanied by smaller and variable bands of 160-170 kDa. (PMID: 12215539)

Notable Publications

Author	Pubmed ID	Journal	Application
Mansheng Li	34901026	Front Cell Dev Biol	IHC

Storage

Storage:
Store at -20°C. Stable for one year after shipment.
Storage Buffer:
PBS with 0.02% sodium azide and 50% glycerol pH 7.3.
Aliquoting is unnecessary for -20°C storage

***** 20ul sizes contain 0.1% BSA**

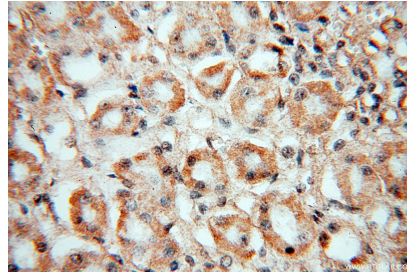
For technical support and original validation data for this product please contact:
T: 1 (888) 4PTGLAB (1-888-478-4522) (toll free in USA), or 1(312) 455-8498 (outside USA)
E: proteintech@ptglab.com
W: ptglab.com

This product is exclusively available under Proteintech Group brand and is not available to purchase from any other manufacturer.

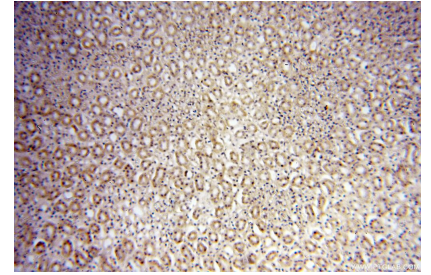
Selected Validation Data



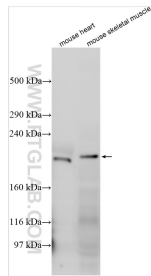
human placenta tissue were subjected to SDS PAGE followed by western blot with 13530-1-AP (Nidogen 2 antibody) at dilution of 1:400 incubated at room temperature for 1.5 hours.



Immunohistochemical analysis of paraffin-embedded human kidney using 13530-1-AP (Nidogen 2 antibody) at dilution of 1:50 (under 40x lens).



Immunohistochemical analysis of paraffin-embedded human kidney using 13530-1-AP (Nidogen 2 antibody) at dilution of 1:50 (under 10x lens).



Various lysates were subjected to SDS PAGE followed by western blot with 13530-1-AP (Nidogen 2 antibody) at dilution of 1:1000 incubated at room temperature for 1.5 hours.