

For Research Use Only

MSY2 Polyclonal antibody

Catalog Number: 13538-1-AP

3 Publications



Basic Information

Catalog Number:

13538-1-AP

Size:

150ul, Concentration: 350 µg/ml by Nanodrop and 327 µg/ml by Bradford method using BSA as the standard;

Source:

Rabbit

Isotype:

IgG

Immunogen Catalog Number:

AG4465

GenBank Accession Number:

BC033800

GeneID (NCBI):

51087

Full Name:

Y box binding protein 2

Calculated MW:

364 aa, 39 kDa

Observed MW:

48 kDa

Purification Method:

Antigen affinity purification

Recommended Dilutions:

WB 1:1000-1:4000

IP 0.5-4.0 µg for IP and 1:200-1:1000 for WB

IHC 1:20-1:200

Applications

Tested Applications:

IHC, IP, WB, ELISA

Cited Applications:

chIP, IF, IHC, IP, WB

Species Specificity:

human, mouse, rat

Cited Species:

mouse

Note-IHC: suggested antigen retrieval with TE buffer pH 9.0; (*) Alternatively, antigen retrieval may be performed with citrate buffer pH 6.0

Positive Controls:

WB: HeLa cells, human stomach tissue, human testis tissue, HepG2 cells

IP: PC-3 cells,

IHC: human ovary tumor tissue,

Background Information

MSY2, also named as CSDA3 and YBX2, belongs to the Y box family of cold shock domain proteins. MSY2 is solely expressed in male and female germ cells and necessary for fertility. MSY2 serves as a coactivator of transcription, binding to the DNA sequence CTGATTGGC/TC/TAA in the promoters of genes transcribed in germ cells, thereby linking transcription with mRNA storage/stabilization (PMID: 19597149). MSY2 has 1 isoform with the molecular mass of 38 kDa. MSY2 is essential for regulating mRNA stability in oocytes (PMID: 21613634).

Notable Publications

Author	Pubmed ID	Journal	Application
Xiaoli Wang	33674260	Development	WB, IF, IP
	34437685	Development	WB, IF, IP
Yu-Hsiang Chou	32749240	J Clin Invest	WB, IHC, chIP

Storage

Storage:

Store at -20°C. Stable for one year after shipment.

Storage Buffer:

PBS with 0.02% sodium azide and 50% glycerol pH 7.3.

Aliquoting is unnecessary for -20°C storage

*** 20ul sizes contain 0.1% BSA

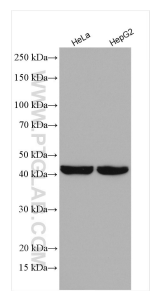
For technical support and original validation data for this product please contact:

T: 1 (888) 4PTGLAB (1-888-478-4522) (toll free in USA), or 1(312) 455-8498 (outside USA)

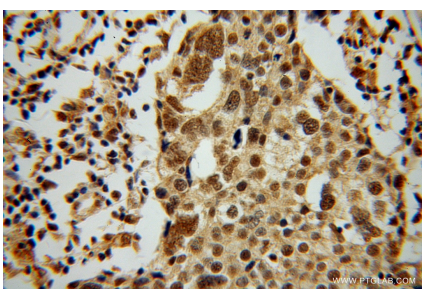
E: proteintech@ptglab.com
W: ptglab.com

This product is exclusively available under Proteintech Group brand and is not available to purchase from any other manufacturer.

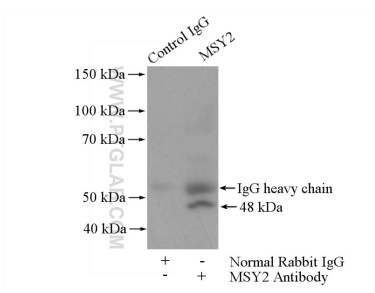
Selected Validation Data



Various lysates were subjected to SDS PAGE followed by western blot with 13538-1-AP (MSY2 antibody) at dilution of 1:2000 incubated at room temperature for 1.5 hours.



Immunohistochemical analysis of paraffin-embedded human ovary tumor using 13538-1-AP (MSY2 antibody) at dilution of 1:50 (under 40x lens).



IP Result of anti-MSY2 (IP:13538-1-AP, 4ug; Detection:13538-1-AP 1:300) with PC-3 cells lysate 1720ug.