

For Research Use Only

COP1 Polyclonal antibody

Catalog Number: 13542-1-AP **1 Publications**



Basic Information

Catalog Number: 13542-1-AP	GenBank Accession Number: BC039723	Purification Method: Antigen affinity purification
Size: 150ul , Concentration: 147 µg/ml by Bradford method using BSA as the standard;	GeneID (NCBI): 64326	Recommended Dilutions: WB 1:500-1:1000 IHC 1:50-1:500
Source: Rabbit	Full Name: ring finger and WD repeat domain 2	
Isotype: IgG	Calculated MW: 731 aa, 80 kDa	
Immunogen Catalog Number: AG4484	Observed MW: 90 kDa	

Applications

Tested Applications: IHC, WB, ELISA	Positive Controls:
Cited Applications: WB	WB : mouse heart tissue,
Species Specificity: human, mouse, rat	IHC : human osteosarcoma tissue,
Cited Species: human	
Note-IHC: suggested antigen retrieval with TE buffer pH 9.0; (*) Alternatively, antigen retrieval may be performed with citrate buffer pH 6.0	

Background Information

COP1 is also named as RFW2, RNF200 and belongs to the COP1 family. It is a ubiquitin ligase that targets key regulators for degradation, and DET1 complexes with COP10 and DDB1, which is proposed to aid in COP1-mediated degradation (PMID:22705257). The endogenous COP1 is localized predominantly in the nucleus, but small amount may also be present in the cytosol. Within the nucleus, COP1 is present in both the nucleoplasm (NP) and the nuclear envelope (NE) fractions, although COP1 is more enriched in the nucleoplasm (PMID:12466024). Two of the COP1 isoforms identified by RNA-seq analysis predicted the size of two proteins detected by the antibody for COP1, a 75 kDa band, corresponding to the longer isoform, and a 50 kDa band corresponding to the shorter isoform. (PMID:24714719). It has been shown that COP1 forms dimerization through its coiled-coil region.

Notable Publications

Author	Pubmed ID	Journal	Application
Yoon-Jin Kim	30393117	Cancer Lett	WB

Storage

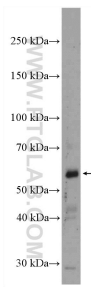
Storage:
Store at -20°C. Stable for one year after shipment.
Storage Buffer:
PBS with 0.02% sodium azide and 50% glycerol pH 7.3.
Aliquoting is unnecessary for -20°C storage

*** 20ul sizes contain 0.1% BSA

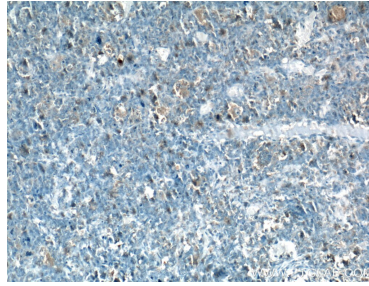
For technical support and original validation data for this product please contact:
T: 1 (888) 4PTGLAB (1-888-478-4522) (toll free in USA), or 1(312) 455-8498 (outside USA)
E: proteintech@ptglab.com
W: ptglab.com

This product is exclusively available under Proteintech Group brand and is not available to purchase from any other manufacturer.

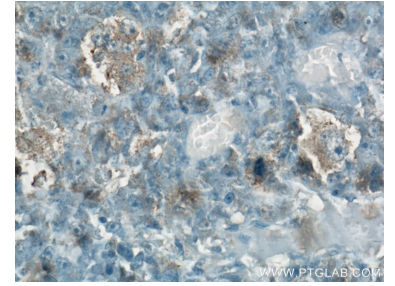
Selected Validation Data



mouse heart tissue were subjected to SDS PAGE followed by western blot with 13542-1-AP (COP1 antibody) at dilution of 1:600 incubated at room temperature for 1.5 hours.



Immunohistochemical analysis of paraffin-embedded human osteosarcoma tissue slide using 13542-1-AP (COP1 Antibody) at dilution of 1:200 (under 10x lens). Heat mediated antigen retrieval with Tris-EDTA buffer (pH 9.0).



Immunohistochemical analysis of paraffin-embedded human osteosarcoma tissue slide using 13542-1-AP (COP1 Antibody) at dilution of 1:200 (under 40x lens). Heat mediated antigen retrieval with Tris-EDTA buffer (pH 9.0).