

For Research Use Only

CROT Polyclonal antibody

Catalog Number: 13543-1-AP

Featured Product

3 Publications



Basic Information

Catalog Number: 13543-1-AP	GenBank Accession Number: BC039004	Purification Method: Antigen affinity purification
Size: 150ul , Concentration: 750 µg/ml by Nanodrop and 400 µg/ml by Bradford method using BSA as the standard;	GeneID (NCBI): 54677	Recommended Dilutions: WB 1:5000-1:50000 IHC 1:20-1:200
Source: Rabbit	Full Name: carnitine O-octanoyltransferase	
Isotype: IgG	Calculated MW: 612 aa, 66 kDa	
Immunogen Catalog Number: AG4486	Observed MW: 65-70 kDa	

Applications

Tested Applications:

FC, IHC, WB, ELISA

Cited Applications:

IF, IHC, WB

Species Specificity:

human, mouse

Cited Species:

human

Note-IHC: suggested antigen retrieval with TE buffer pH 9.0; (*) Alternatively, antigen retrieval may be performed with citrate buffer pH 6.0

Positive Controls:

WB : mouse kidney tissue, mouse liver tissue

IHC : human liver cancer tissue,

Background Information

CROT, also named as COT, belongs to the carnitine/choline acetyltransferase family. It is a beta-oxidation of fatty acids. The highest activity concerns the C6 to C10 chain length substrate. CROT converts the end product of pristanic acid beta oxidation, 4,8-dimethylnonanoyl-CoA, to its corresponding carnitine ester. Carnitine palmitoyltransferase (CPT) deficiencies are common disorders of mitochondrial fatty acid oxidation. The CPT system is made up of two separate proteins located in the outer (CPT1) and inner (CPT2) mitochondrial membranes. CROT is an active forms for carnitine octanoyltransferase. This antibody can bind the close sequences genes.

Notable Publications

Author	Pubmed ID	Journal	Application
Xin Li	36120434	Front Endocrinol (Lausanne)	WB,IHC,IF
Jake Hsu	36587768	J Biol Chem	WB
Jack D Sanford	37307919	J Biol Chem	WB

Storage

Storage:

Store at -20°C. Stable for one year after shipment.

Storage Buffer:

PBS with 0.02% sodium azide and 50% glycerol pH 7.3.

Aliquoting is unnecessary for -20°C storage

*** 20ul sizes contain 0.1% BSA

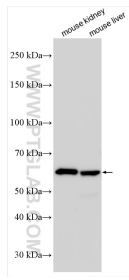
For technical support and original validation data for this product please contact:

T: 1 (888) 4PTGLAB (1-888-478-4522) (toll free in USA), or 1(312) 455-8498 (outside USA)

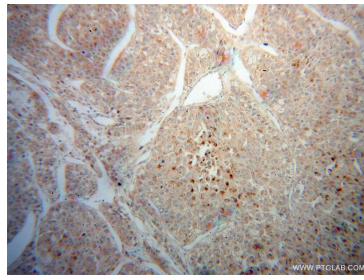
E: proteintech@ptglab.com
W: ptglab.com

This product is exclusively available under Proteintech Group brand and is not available to purchase from any other manufacturer.

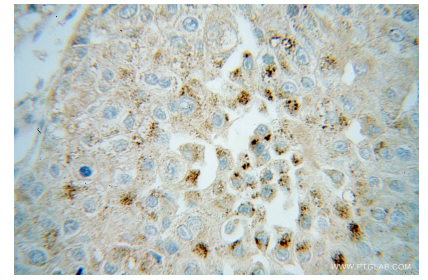
Selected Validation Data



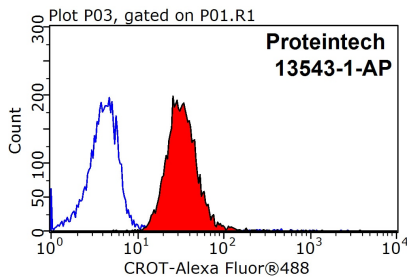
Various lysates were subjected to SDS PAGE followed by western blot with 13543-1-AP (CROT antibody) at dilution of 1:10000 incubated at room temperature for 1.5 hours.



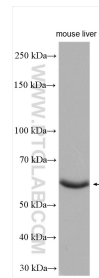
Immunohistochemical analysis of paraffin-embedded human liver cancer using 13543-1-AP (CROT antibody) at dilution of 1:100 (under 10x lens).



Immunohistochemical analysis of paraffin-embedded human liver cancer using 13543-1-AP (CROT antibody) at dilution of 1:100 (under 40x lens).



1×10^6 HepG2 cells were stained with 0.2ug CROT antibody (13543-1-AP, red) and control antibody (blue). Fixed with 90% MeOH blocked with 3% BSA (30 min). Alexa Fluor 488-conjugated AffiniPure Goat Anti-Rabbit IgG(H+L) with dilution 1:1500.



mouse liver tissue were subjected to SDS PAGE followed by western blot with 13543-1-AP (CROT antibody) at dilution of 1:6000 incubated at room temperature for 1.5 hours.