

For Research Use Only

SFI1 Polyclonal antibody

Catalog Number: 13550-1-AP

Featured Product

8 Publications



Basic Information

Catalog Number:

13550-1-AP

Size:

150ul, Concentration: 300 ug/ml by Nanodrop and 227 ug/ml by Bradford method using BSA as the standard;

Source:

Rabbit

Isotype:

IgG

Immunogen Catalog Number:

AG4268

GenBank Accession Number:

BC033613

GeneID (NCBI):

9814

UNIPROT ID:

A8K8P3

Full Name:

Sfi1 homolog, spindle assembly associated (yeast)

Calculated MW:

1211 aa, 134 kDa

Observed MW:

148 kDa

Purification Method:

Antigen affinity purification

Recommended Dilutions:

WB 1:200-1:1000

IF/ICC 1:10-1:100

Applications

Tested Applications:

WB, IF/ICC, ELISA

Cited Applications:

WB, IF, CoIP

Species Specificity:

human, mouse

Cited Species:

human, mouse

Positive Controls:

WB : A549 cells, HepG2 cells, mouse lung tissue

IF/ICC : HepG2 cells, HeLa cells

Notable Publications

Author	Pubmed ID	Journal	Application
Marine H Laporte	36125182	EMBO J	IF
Ebtissal M Khouj	31492759	J Cell Sci	WB
Isha Nasa	29764992	Sci Signal	WB

Storage

Storage:

Store at -20°C. Stable for one year after shipment.

Storage Buffer:

PBS with 0.02% sodium azide and 50% glycerol pH 7.3.

Aliquoting is unnecessary for -20°C storage

*** 20ul sizes contain 0.1% BSA

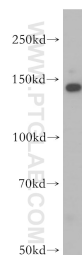
For technical support and original validation data for this product please contact:

T: 1 (888) 4PTGLAB (1-888-478-4522) (toll free in USA), or 1(312) 455-8498 (outside USA)

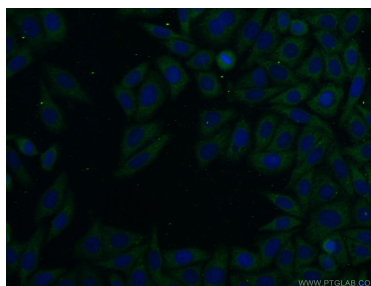
E: proteintech@ptglab.com
W: ptglab.com

This product is exclusively available under Proteintech Group brand and is not available to purchase from any other manufacturer.

Selected Validation Data



A549 cells were subjected to SDS PAGE followed by western blot with 13550-1-AP (SFI1 antibody) at dilution of 1:400 incubated at room temperature for 1.5 hours.



Immunofluorescent analysis of HepG2 cells using 13550-1-AP (SFI1 antibody) at dilution of 1:25 and Alexa Fluor 488-conjugated Goat Anti-Rabbit IgG(H+L).