

For Research Use Only

SFI1 Polyclonal antibody, PBS Only

Catalog Number: 13550-1-PBS

Featured Product



Basic Information

Catalog Number:

13550-1-PBS

Size:

100ug, Concentration: 1 mg/ml by Nanodrop;

Source:

Rabbit

Isotype:

IgG

Immunogen Catalog Number:

AG4268

GenBank Accession Number:

BC033613

GeneID (NCBI):

9814

UNIPROT ID:

A8K8P3

Full Name:

Sfi1 homolog, spindle assembly associated (yeast)

Calculated MW:

1211 aa, 134 kDa

Observed MW:

148 kDa

Purification Method:

Antigen affinity purification

Applications

Tested Applications:

WB, IF/ICC, Indirect ELISA

Species Specificity:

human, mouse

Background Information

human SFI1 is a centriolar protein that associates with a pool of Centrin at the distal end of the centriole. SFI1 forms an interdependent complex with centrin at the centriolar distal end. Human SFI1 is an evolutionarily conserved protein of 1,242 amino acids that contains five residues within full Cdk consensus motifs (S/T*-P-x-K/R), four at the C terminus known to be phosphorylated in vivo (T816, S855, S882, S892) and one immediately preceding the C terminus (PMID: 25340401, 31197030).

Storage

Storage:

Store at -80°C.

Storage Buffer:

PBS only, pH7.3

For technical support and original validation data for this product please contact:

T: 1 (888) 4PTGLAB (1-888-478-4522) (toll free in USA), or 1(312) 455-8498 (outside USA)

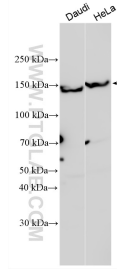
E: proteintech@ptglab.com
W: ptglab.com

This product is exclusively available under Proteintech Group brand and is not available to purchase from any other manufacturer.

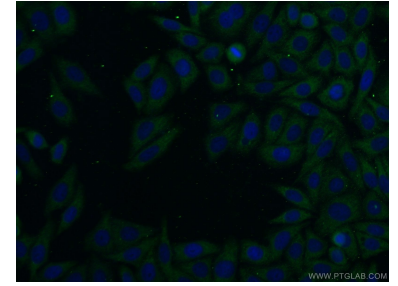
Selected Validation Data



A549 cells were subjected to SDS PAGE followed by western blot with 13550-1-AP (SF11 antibody) at dilution of 1:400 incubated at room temperature for 1.5 hours. This data was developed using the same antibody clone with 13550-1-PBS in a different storage buffer formulation.



Various lysates were subjected to SDS PAGE followed by western blot with 13550-1-AP (SF11 antibody) at dilution of 1:2000 incubated at room temperature for 1.5 hours. This data was developed using the same antibody clone with 13550-1-PBS in a different storage buffer formulation.



Immunofluorescent analysis of HepG2 cells using 13550-1-AP (SF11 antibody) at dilution of 1:25 and Alexa Fluor 488-conjugated AffiniPure Goat Anti-Rabbit IgG(H+L). This data was developed using the same antibody clone with 13550-1-PBS in a different storage buffer formulation.