

For Research Use Only

PES1 Polyclonal antibody

Catalog Number: 13553-1-AP

Featured Product

5 Publications



Basic Information

Catalog Number: 13553-1-AP	GenBank Accession Number: BC032489	Purification Method: Antigen affinity purification
Size: 150ul, Concentration: 500 µg/ml by Nanodrop and 367 µg/ml by Bradford method using BSA as the standard;	GeneID (NCBI): 23481	Recommended Dilutions: WB 1:2000-1:10000 IP 0.5-4.0 ug for IP and 1:200-1:1000 for WB
Source: Rabbit	Full Name: pescadillo homolog 1, containing BRCT domain (zebrafish)	IHC 1:50-1:500 IF 1:50-1:500
Isotype: IgG	Calculated MW: 588 aa, 68 kDa	
Immunogen Catalog Number: AG4342	Observed MW: 72 kDa	

Applications

Tested Applications: IF, IHC, IP, WB, ELISA	Positive Controls: WB : COLO 320 cells, MCF-7 cells
Cited Applications: IF, IHC, IP, WB	IP : COLO 320 cells,
Species Specificity: human	IHC : human gliomas tissue,
Cited Species: goat, human, mouse	IF : MCF-7 cells,

Note-IHC: suggested antigen retrieval with TE buffer pH 9.0; (*) Alternatively, antigen retrieval may be performed with citrate buffer pH 6.0

Background Information

Notable Publications

Author	Pubmed ID	Journal	Application
Zhipeng Sun	36499219	Int J Mol Sci	WB
Zehua Bian	34782005	J Exp Clin Cancer Res	WB,IHC,IP
Jing Wang	30630006	Life Sci	WB,IHC

Storage

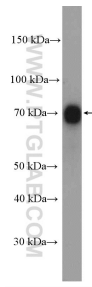
Storage:
Store at -20°C. Stable for one year after shipment.
Storage Buffer:
PBS with 0.02% sodium azide and 50% glycerol pH 7.3.
Aliquoting is unnecessary for -20°C storage

*** 20ul sizes contain 0.1% BSA

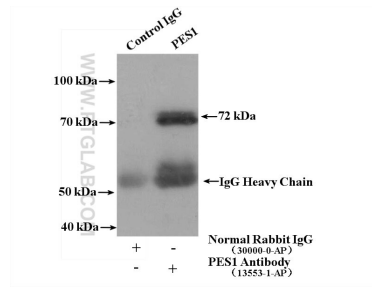
For technical support and original validation data for this product please contact:
T: 1 (888) 4PTGLAB (1-888-478-4522) (toll free in USA), or 1(312) 455-8498 (outside USA)
E: proteintech@ptglab.com
W: ptglab.com

This product is exclusively available under Proteintech Group brand and is not available to purchase from any other manufacturer.

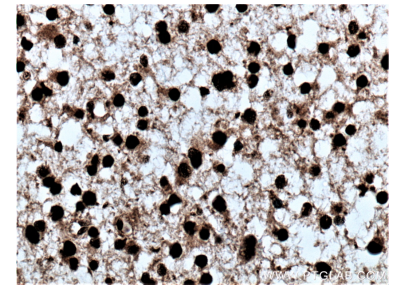
Selected Validation Data



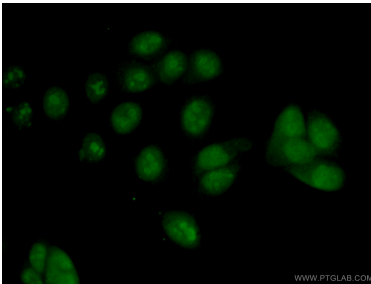
COLO 320 cells were subjected to SDS PAGE followed by western blot with 13553-1-AP (PES1 antibody) at dilution of 1:5000 incubated at room temperature for 1.5 hours.



COLO 320 cells were subjected to SDS PAGE followed by western blot with 13553-1-AP (PES1 antibody) at dilution of 1:300.



Immunohistochemical analysis of paraffin-embedded human gliomas tissue slide using 13553-1-AP (PES1 antibody) at dilution of 1:200 (under 40x lens. Heat mediated antigen retrieval with Tris-EDTA buffer (pH 9.0).



Immunofluorescent analysis of (4% PFA) fixed MCF-7 cells using 13553-1-AP (PES1 antibody) at dilution of 1:50 and Alexa Fluor 488-conjugated AffiniPure Goat Anti-Rabbit IgG(H+L).