

For Research Use Only

TLK1 Polyclonal antibody

Catalog Number: 13564-1-AP

2 Publications



Basic Information

Catalog Number:

13564-1-AP

Size:

150ul , Concentration: 400 µg/ml by Nanodrop and 333 µg/ml by Bradford method using BSA as the standard;

Source:

Rabbit

Isotype:

IgG

Immunogen Catalog Number:

AG4440

GenBank Accession Number:

BC032657

GeneID (NCBI):

9874

UNIPROT ID:

Q9UKI8

Full Name:

tousled-like kinase 1

Calculated MW:

766 aa, 87 kDa

Observed MW:

85 kDa

Purification Method:

Antigen affinity purification

Recommended Dilutions:

WB 1:500-1:3000

IP 0.5-4.0 ug for 1.0-3.0 mg of total protein lysate

IF/ICC 1:50-1:500

Applications

Tested Applications:

WB, IP, IF, ELISA

Cited Applications:

WB, IHC

Species Specificity:

human, mouse, rat

Cited Species:

human, mouse

Positive Controls:

WB : HeLa cells,

IP : HeLa cells,

IF/ICC : HeLa cells,

Notable Publications

Author	Pubmed ID	Journal	Application
Fangfang Wu	31311824	J Neurosci	WB
Ruo-Chuan Sun	38111505	World J Gastroenterol	WB,IHC

Storage

Storage:

Store at -20°C. Stable for one year after shipment.

Storage Buffer:

PBS with 0.02% sodium azide and 50% glycerol pH 7.3.

Aliquoting is unnecessary for -20°C storage

*** 20ul sizes contain 0.1% BSA

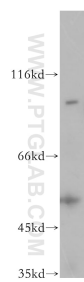
For technical support and original validation data for this product please contact:

T: 1 (888) 4PTGLAB (1-888-478-4522) (toll free in USA), or 1(312) 455-8498 (outside USA)

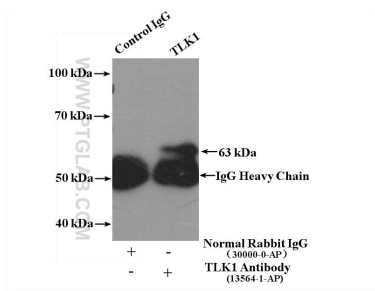
E: proteintech@ptglab.com
W: ptglab.com

This product is exclusively available under Proteintech Group brand and is not available to purchase from any other manufacturer.

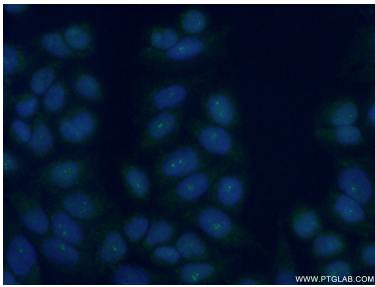
Selected Validation Data



HeLa cells were subjected to SDS PAGE followed by western blot with 13564-1-AP (TLK1 antibody) at dilution of 1:500 incubated at room temperature for 1.5 hours.



IP result of anti-TLK1 (IP:13564-1-AP, 4ug; Detection:13564-1-AP 1:500) with HeLa cells lysate 3200ug.



Immunofluorescent analysis of (10% Formaldehyde) fixed HeLa cells using 13564-1-AP (TLK1 antibody) at dilution of 1:50 and Alexa Fluor 488-conjugated AffiniPure Goat Anti-Rabbit IgG(H+L).