

For Research Use Only

FCER1G Polyclonal antibody

Catalog Number: 13566-1-AP



Basic Information

Catalog Number: 13566-1-AP	GenBank Accession Number: BC033872	Purification Method: Antigen affinity purification
Size: 150ul , Concentration: 380 ug/ml by Nanodrop and 147 ug/ml by Bradford method using BSA as the standard;	GeneID (NCBI): 2207	Recommended Dilutions: WB 1:500-1:1000
Source: Rabbit	UNIPROT ID: P30273	IHC 1:50-1:500
Isotype: IgG	Full Name: Fc fragment of IgE, high affinity I, receptor for; gamma polypeptide	IF/ICC 1:50-1:500
Immunogen Catalog Number: AG4442	Calculated MW: 87 aa, 10 kDa	
	Observed MW: 10 kDa	

Applications

Tested Applications: WB, IHC, IF/ICC, ELISA	Positive Controls:
Species Specificity: human, mouse	WB : RAW 264.7 cells, THP-1 cells
Note-IHC: suggested antigen retrieval with TE buffer pH 9.0; (*) Alternatively, antigen retrieval may be performed with citrate buffer pH 6.0	IHC : human ovary cancer tissue,
	IF/ICC : THP-1 cells,

Background Information

FCER1G (Fc receptor gamma-chain, FcRgamma), also known as Fc-epsilon RI-gamma, or IgE Fc receptor subunit gamma (FceRI gamma), is a component of the high-affinity immunoglobulin E (IgE) receptor (Fc epsilon RI) which is a tetrameric complex of one alpha subunit, one beta subunit, and two disulfide-linked gamma subunits (PMID: 2146219; 2531187). Fc epsilon RI is present exclusively on mast cells and basophils, mediating allergic inflammatory signaling (PMID: 17438574). FCER1G is widely expressed and contains an immunoreceptor tyrosine-based activation motif (ITAM) that transduces activation signals from various immunoreceptors (PMID: 19098920).

Storage

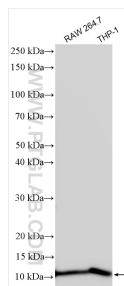
Storage:
Store at -20°C. Stable for one year after shipment.
Storage Buffer:
PBS with 0.02% sodium azide and 50% glycerol pH 7.3.
Aliquoting is unnecessary for -20°C storage

*** 20ul sizes contain 0.1% BSA

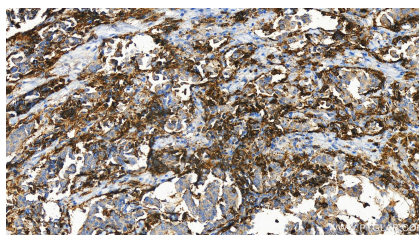
For technical support and original validation data for this product please contact:
T: 1 (888) 4PTGLAB (1-888-478-4522) (toll free in USA), or 1(312) 455-8498 (outside USA)
E: proteintech@ptglab.com
W: ptglab.com

This product is exclusively available under Proteintech Group brand and is not available to purchase from any other manufacturer.

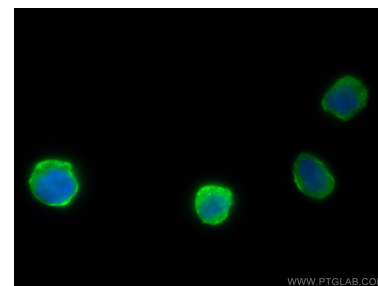
Selected Validation Data



Various lysates were subjected to SDS PAGE followed by western blot with 13566-1-AP (FCER1G antibody) at dilution of 1:500 incubated at room temperature for 1.5 hours.



Immunohistochemical analysis of paraffin-embedded human ovary cancer tissue slide using 13566-1-AP (FCER1G antibody) at dilution of 1:100 (under 20x lens). Heat mediated antigen retrieval with Tris-EDTA buffer (pH 9.0).



Immunofluorescent analysis of (4% PFA) fixed THP-1 cells using FCER1G antibody (13566-1-AP) at dilution of 1:200 and CoraLite®488-Conjugated AffiniPure Goat Anti-Rabbit IgG(H+L) (SA00013-2).