

For Research Use Only

SLC22A2 Polyclonal antibody

Catalog Number: 13594-1-AP

3 Publications



Basic Information

Catalog Number:

13594-1-AP

Size:

150ul, Concentration: 133 ug/ml by Nanodrop and 133 ug/ml by Bradford method using BSA as the standard;

Source:

Rabbit

Isotype:

IgG

Immunogen Catalog Number:

AG4500

GenBank Accession Number:

BC039899

GeneID (NCBI):

6582

UNIPROT ID:

O15244

Full Name:

solute carrier family 22 (organic cation transporter), member 2

Calculated MW:

555 aa, 63 kDa

Observed MW:

60-70 kDa

Purification Method:

Antigen affinity purification

Recommended Dilutions:

WB 1:500-1:3000

Applications

Tested Applications:

WB, ELISA

Cited Applications:

WB

Species Specificity:

human, mouse, rat

Cited Species:

human, mouse, rat

Positive Controls:

WB: mouse kidney tissue, HEK-293 cells, rat kidney tissue

Background Information

SLC22A2, also named as OCT2, belongs to the major facilitator (TC 2.A.1) superfamily and Organic cation transporter (TC 2.A.1.19) family. The SLC22A2 gene encodes for the organic cation transporter 2 (OCT2) protein which acts as a renal uptake transporter. Human OCT2 (hOCT2) is expressed on the basolateral side of the proximal tubule cells and plays a crucial role in the disposition and renal clearance of cationic drugs and endogenous compounds (PMID: 35143948). SLC22A2 has 3 isoforms with the molecular mass of 27, 54 and 63 kDa. Sometimes higher molecular weight around 70 kDa can also be observed, which may be a modified variant of SLC22A2.

Notable Publications

| Author | Pubmed ID | Journal | Application |
|-----------------|-----------|---------------------|-------------|
| Ching-Feng Chiu | 36076515 | Biomed Pharmacother | WB |
| Aijie Zhang | 38964638 | Chem Biol Interact | WB |
| Xiangyi Wang | 37577390 | J Pharm Anal | WB |

Storage

Storage:

Store at -20°C. Stable for one year after shipment.

Storage Buffer:

PBS with 0.02% sodium azide and 50% glycerol pH 7.3.

Aliquoting is unnecessary for -20°C storage

*** 20ul sizes contain 0.1% BSA

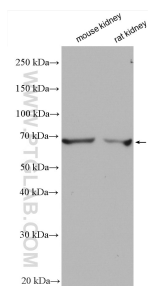
For technical support and original validation data for this product please contact:

T: 1 (888) 4PTGLAB (1-888-478-4522) (toll free in USA), or 1(312) 455-8498 (outside USA)

E: proteintech@ptglab.com
W: ptglab.com

This product is exclusively available under Proteintech Group brand and is not available to purchase from any other manufacturer.

Selected Validation Data



Various lysates were subjected to SDS PAGE followed by western blot with 13594-1-AP (SLC22A2 antibody) at dilution of 1:1500 incubated at room temperature for 1.5 hours.