

For Research Use Only

# Carboxypeptidase A6 Polyclonal antibody

Catalog Number: 13604-1-AP

1 Publications



## Basic Information

<b>Catalog Number:</b> 13604-1-AP	<b>GenBank Accession Number:</b> BC033684	<b>Purification Method:</b> Antigen affinity purification
<b>Size:</b> 150ul , Concentration: 133 ug/ml by Bradford method using BSA as the standard;	<b>GeneID (NCBI):</b> 57094	<b>Recommended Dilutions:</b> WB 1:500-1:1000
<b>Source:</b> Rabbit	<b>UNIPROT ID:</b> Q8N4T0	<b>IHC 1:50-1:500</b>
<b>Isotype:</b> IgG	<b>Full Name:</b> carboxypeptidase A6	<b>IF/ICC 1:10-1:100</b>
<b>Immunogen Catalog Number:</b> AG4466	<b>Calculated MW:</b> 437 aa, 51 kDa	
	<b>Observed MW:</b> 65 kDa, 51 kDa	

## Applications

<b>Tested Applications:</b> WB, IHC, IF/ICC, ELISA	<b>Positive Controls:</b> WB : HepG2 cells, mouse brain tissue
<b>Cited Applications:</b> WB	<b>IHC :</b> human gliomas tissue,
<b>Species Specificity:</b> human, mouse, rat	<b>IF/ICC :</b> HepG2 cells,
<b>Cited Species:</b> human	
<b>Note-IHC: suggested antigen retrieval with TE buffer pH 9.0; (*) Alternatively, antigen retrieval may be performed with citrate buffer pH 6.0</b>	

## Background Information

Carboxypeptidase A6 (CPA6) is an extracellular matrixbound metalloproteinase (CP) that has been implicated in Duane syndrome, a neurodevelopmental disorder in which the lateral rectus extraocular muscle is not properly innervated. Consistent with a role in Duane syndrome, CPA6 is expressed in a number of chondrocytic and nervous tissues during embryogenesis. It has three isoforms. The product recognizes the C-terminal of this protein.

## Notable Publications

Author	Pubmed ID	Journal	Application
Xianren Wang	37011707	Arch Biochem Biophys	WB

## Storage

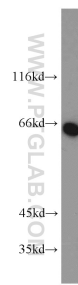
**Storage:**  
Store at -20°C. Stable for one year after shipment.  
**Storage Buffer:**  
PBS with 0.02% sodium azide and 50% glycerol pH 7.3.  
**Aliquoting is unnecessary for -20°C storage**

\*\*\* 20ul sizes contain 0.1% BSA

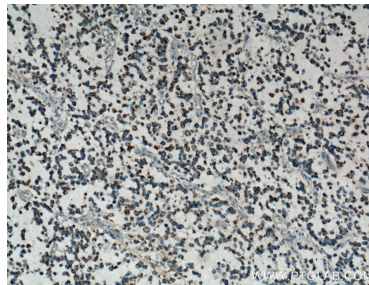
For technical support and original validation data for this product please contact:  
T: 1 (888) 4PTGLAB (1-888-478-4522) (toll free in USA), or 1(312) 455-8498 (outside USA)  
E: [proteintech@ptglab.com](mailto:proteintech@ptglab.com)  
W: [ptglab.com](http://ptglab.com)

This product is exclusively available under Proteintech Group brand and is not available to purchase from any other manufacturer.

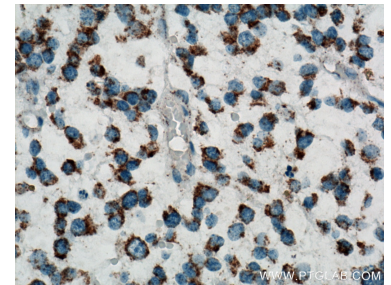
## Selected Validation Data



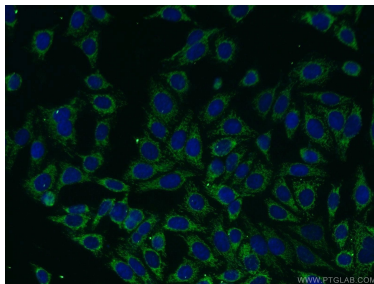
HepG2 cells were subjected to SDS PAGE followed by western blot with 13604-1-AP (Carboxypeptidase A6 antibody) at dilution of 1:500 incubated at room temperature for 1.5 hours.



Immunohistochemical analysis of paraffin-embedded human gliomas tissue slide using 13604-1-AP (Carboxypeptidase A6 antibody) at dilution of 1:200 (under 10x lens. Heat mediated antigen retrieval with Tris-EDTA buffer (pH 9.0).



Immunohistochemical analysis of paraffin-embedded human gliomas tissue slide using 13604-1-AP (Carboxypeptidase A6 antibody) at dilution of 1:200 (under 40x lens. Heat mediated antigen retrieval with Tris-EDTA buffer (pH 9.0).



Immunofluorescent analysis of HepG2 cells using 13604-1-AP (Carboxypeptidase A6 antibody) at dilution of 1:25 and Alexa Fluor 488-conjugated Goat Anti-Rabbit IgG(H+L).