

For Research Use Only

POU2AF1 Polyclonal antibody

Catalog Number: 13605-1-AP



Basic Information

Catalog Number: 13605-1-AP	GenBank Accession Number: BC032549	Purification Method: Antigen affinity purification
Size: 150ul , Concentration: 650 ug/ml by Nanodrop;	GeneID (NCBI): 5450	Recommended Dilutions: WB 1:2000-1:10000 IF/ICC 1:50-1:500
Source: Rabbit	ENSEMBL Gene ID: ENSG00000110777	
Isotype: IgG	UNIPROT ID: Q16633	
Immunogen Catalog Number: AG4482	Full Name: POU class 2 associating factor 1	
	Calculated MW: 256 aa, 27 kDa	
	Observed MW: 35 kDa	

Applications

Tested Applications: WB, IF/ICC, ELISA	Positive Controls:
Species Specificity: human, mouse, rat	WB : Raji cells, mouse lung tissue IF/ICC : Raji cells,

Background Information

POU2AF1, also named as BOB-1 or OCA-B, is a 256 amino acid protein, which belongs to the POU2AF1 family. POU2AF1 is expressed in B-cell specific. POU2AF1 as a transcriptional coactivator that specifically associates with either OCT1 or OCT2. It boosts the OCT1 mediated promoter activity and to a lesser extent, that of OCT2. It has no intrinsic DNA-binding activity. It recognizes the POU domains of OCT1 and OCT2. It is essential for the response of B-cells to antigens and required for the formation of germinal centers. The predicted size of this protein is 27 kDa. Studies have reported that the protein has a multi-band size of 34-35 kDa through siRNA interference experiments (PMID: 17621271). This result is the same as our experiments.

Storage

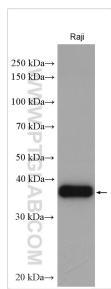
Storage:
Store at -20°C. Stable for one year after shipment.
Storage Buffer:
PBS with 0.02% sodium azide and 50% glycerol, pH7.3
Aliquoting is unnecessary for -20°C storage

*** 20ul sizes contain 0.1% BSA

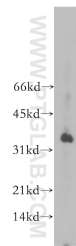
For technical support and original validation data for this product please contact:
T: 1 (888) 4PTGLAB (1-888-478-4522) (toll free in USA), or 1(312) 455-8498 (outside USA)
E: proteintech@ptglab.com
W: ptglab.com

This product is exclusively available under Proteintech Group brand and is not available to purchase from any other manufacturer.

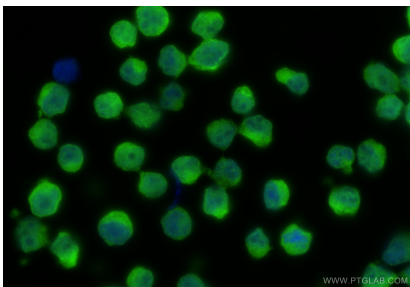
Selected Validation Data



Raji cells were subjected to SDS PAGE followed by western blot with 13605-1-AP (POU2AF1 antibody) at dilution of 1:5000 and incubated at room temperature for 1.5 hours.



mouse lung tissue was subjected to SDS PAGE followed by western blot with 13605-1-AP (POU2AF1 antibody) at dilution of 1:500 and incubated at room temperature for 1.5 hours.



Immunofluorescent analysis of (4% PFA) fixed Raji cells using POU2AF1 antibody (13605-1-AP) at dilution of 1:200 and CoraLite®488-Conjugated Goat Anti-Rabbit IgG(H+L) (SA00013-2).