

For Research Use Only

# REG3A Polyclonal antibody

Catalog Number: 13610-1-AP



## Basic Information

### Catalog Number:

13610-1-AP

### Size:

150ul , Concentration: 600 ug/ml by Nanodrop;

### Source:

Rabbit

### Isotype:

IgG

### Immunogen Catalog Number:

AG4508

### GenBank Accession Number:

BC036776

### GeneID (NCBI):

5068

### UNIPROT ID:

Q06141

### Full Name:

regenerating islet-derived 3 alpha

### Calculated MW:

175 aa, 19 kDa

### Observed MW:

16 kDa

### Purification Method:

Antigen affinity purification

### Recommended Dilutions:

WB 1:1000-1:4000

## Applications

### Tested Applications:

WB, ELISA

### Species Specificity:

human, mouse, rat

### Positive Controls:

WB : mouse small intestine tissue, rat small intestine tissue

## Background Information

Regenerating family member 3 alpha (Reg3A) encodes a pancreatic secretory protein that may be involved in cell proliferation or differentiation. During pancreatic inflammation, the secretion of Reg3A by inflamed acinar cells is sensitively and markedly upregulated. The mature protein also functions as an antimicrobial protein with antibacterial activity.

## Storage

### Storage:

Store at -20°C. Stable for one year after shipment.

### Storage Buffer:

PBS with 0.02% sodium azide and 50% glycerol pH 7.3.

Aliquoting is unnecessary for -20°C storage

\*\*\* 20ul sizes contain 0.1% BSA

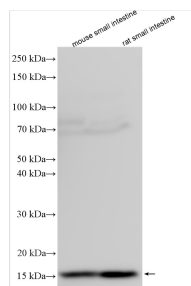
For technical support and original validation data for this product please contact:

T: 1 (888) 4PTGLAB (1-888-478-4522) (toll free in USA), or 1(312) 455-8498 (outside USA)

E: [proteintech@ptglab.com](mailto:proteintech@ptglab.com)  
W: [ptglab.com](http://ptglab.com)

This product is exclusively available under Proteintech Group brand and is not available to purchase from any other manufacturer.

## Selected Validation Data



Various lysates were subjected to SDS PAGE followed by western blot with 13610-1-AP (REG3A antibody) at dilution of 1:2000 incubated at room temperature for 1.5 hours.