

For Research Use Only

IFT20 Polyclonal antibody

Catalog Number: 13615-1-AP

Featured Product

77 Publications



Basic Information

Catalog Number:

13615-1-AP

Size:

150ul, Concentration: 400 ug/ml by Nanodrop;

Source:

Rabbit

Isotype:

IgG

Immunogen Catalog Number:

AG4521

GenBank Accession Number:

BC038094

GeneID (NCBI):

90410

UNIPROT ID:

Q8IY31

Full Name:

intraflagellar transport 20 homolog (Chlamydomonas)

Calculated MW:

15 kDa

Observed MW:

15-18 kDa

Purification Method:

Antigen affinity purification

Recommended Dilutions:

WB 1:300-1:800
IP 0.5-4.0 ug for 1.0-3.0 mg of total protein lysate
IHC 1:20-1:200
IF/ICC 1:20-1:200

Applications

Tested Applications:

WB, IHC, IF/ICC, IP, ELISA

Cited Applications:

WB, IHC, IF, IP, CoIP

Species Specificity:

human, mouse, rat, canine

Cited Species:

human, mouse, rat, canine, zebrafish

Note-IHC: suggested antigen retrieval with TE buffer pH 9.0; (*) Alternatively, antigen retrieval may be performed with citrate buffer pH 6.0

Positive Controls:

WB: HEK-293 cells, MDCK cells, mouse testis tissue, rat testis tissue

IP: mouse testis tissue,

IHC: human endometrial cancer tissue,

IF/ICC: hTERT-RPE1 cells, MDCK cells

Background Information

Intraflagellar transport (IFT), mediated by molecular motors and IFT particles, is an important transport process that occurs in the cilium. IFT particles are multi-subunit complexes that are made up of complex A and complex B. IFT20 is a component of IFT complex B and involved in ciliary process assembly. It is associated with the Golgi complex and plays a role in the trafficking of ciliary membrane proteins from the Golgi complex to the cilium.

Notable Publications

Author	Pubmed ID	Journal	Application
Hiroyuki Yamaguchi	32988591	Biochem Biophys Res Commun	WB
Oliva Palander	33124112	FASEB J	IF
Roxane Van Heurck	36334595	Neuron	IF

Storage

Storage:

Store at -20°C. Stable for one year after shipment.

Storage Buffer:

PBS with 0.02% sodium azide and 50% glycerol, pH7.3

Aliquoting is unnecessary for -20°C storage

*** 20ul sizes contain 0.1% BSA

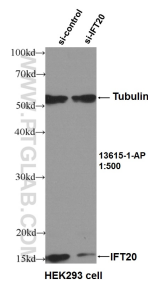
For technical support and original validation data for this product please contact:

T: 1 (888) 4PTGLAB (1-888-478-4522) (toll free in USA), or 1(312) 455-8498 (outside USA)

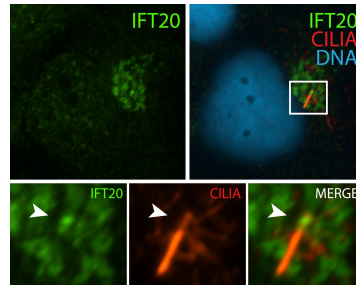
E: proteintech@ptglab.com
W: ptglab.com

This product is exclusively available under Proteintech Group brand and is not available to purchase from any other manufacturer.

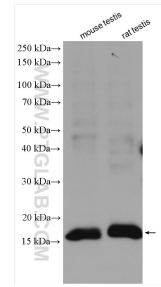
Selected Validation Data



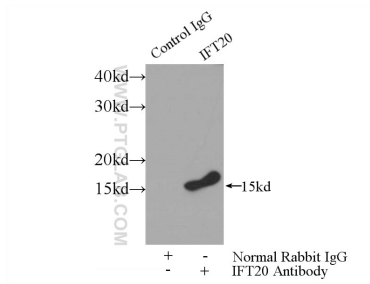
WB result of IFT20 antibody (13615-1-AP, 1:500) with si-Control and si-IFT20 transfected HEK293 cells.



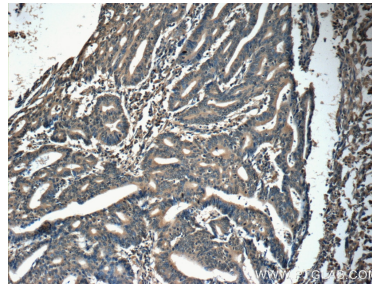
IF result (localization to Golgi-like structures) of anti-IFT20 (13615-1-AP, 1:50) with serum-starved hTERT-RPE1 (MoTH fixed) by Dr. Moshe Kim.



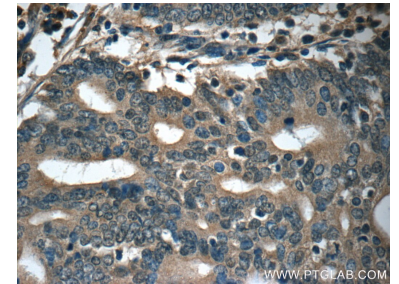
Various lysates were subjected to SDS PAGE followed by western blot with 13615-1-AP (IFT20 antibody) at dilution of 1:800 incubated at room temperature for 1.5 hours.



IP result of anti-IFT20 (IP:13615-1-AP, 3ug; Detection:13615-1-AP 1:700) with mouse testis tissue lysate 4000ug.



Immunohistochemical analysis of paraffin-embedded human endometrial cancer tissue slide using 13615-1-AP (IFT20 Antibody) at dilution of 1:50 (under 10x lens).



Immunohistochemical analysis of paraffin-embedded human endometrial cancer tissue slide using 13615-1-AP (IFT20 Antibody) at dilution of 1:50 (under 40x lens).