

For Research Use Only

RASGEF1B Polyclonal antibody

Catalog Number: 13617-1-AP



Basic Information

Catalog Number:

13617-1-AP

Size:

150ul , Concentration: 200 ug/ml by Nanodrop and 160 ug/ml by Bradford method using BSA as the standard;

Source:

Rabbit

Isotype:

IgG

Immunogen Catalog Number:

AG4525

GenBank Accession Number:

BC036784

GeneID (NCBI):

153020

UNIPROT ID:

Q0VAM2

Full Name:

RasGEF domain family, member 1B

Calculated MW:

55 kDa

Observed MW:

50 kDa

Purification Method:

Antigen affinity purification

Recommended Dilutions:

WB 1:500-1:1000

IHC 1:20-1:200

Applications

Tested Applications:

WB, IHC, ELISA

Species Specificity:

human, mouse, rat

Note-IHC: suggested antigen retrieval with TE buffer pH 9.0; (*) Alternatively, antigen retrieval may be performed with citrate buffer pH 6.0

Positive Controls:

WB : human brain tissue, mouse lung tissue, mouse ovary tissue

IHC : human stomach tissue,

Background Information

RASGEF1B is a guanine-nucleotide exchange factor, whose expression is induced in macrophages on stimulation by TLR2 and TLR4 agonists. It interacts with Ras family proteins. It also interacts with CCDC124 during cytokinesis.

Storage

Storage:

Store at -20°C. Stable for one year after shipment.

Storage Buffer:

PBS with 0.02% sodium azide and 50% glycerol pH 7.3.

Aliquoting is unnecessary for -20°C storage

*** 20ul sizes contain 0.1% BSA

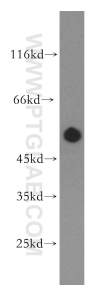
For technical support and original validation data for this product please contact:

T: 1 (888) 4PTGLAB (1-888-478-4522) (toll free in USA), or 1(312) 455-8498 (outside USA)

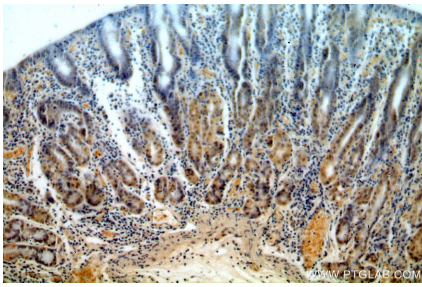
E: proteintech@ptglab.com
W: ptglab.com

This product is exclusively available under Proteintech Group brand and is not available to purchase from any other manufacturer.

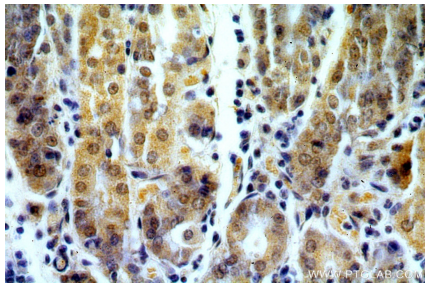
Selected Validation Data



human brain tissue were subjected to SDS PAGE followed by western blot with 13617-1-AP (RASGEF1B antibody) at dilution of 1:300 incubated at room temperature for 1.5 hours.



Immunohistochemical analysis of paraffin-embedded human stomach using 13617-1-AP (RASGEF1B antibody) at dilution of 1:50 (under 10x lens).



Immunohistochemical analysis of paraffin-embedded human stomach using 13617-1-AP (RASGEF1B antibody) at dilution of 1:50 (under 40x lens).