

For Research Use Only

# SERCA3 Polyclonal antibody

Catalog Number: 13619-1-AP

5 Publications



## Basic Information

### Catalog Number:

13619-1-AP

### Size:

150ul, Concentration: 300 ug/ml by Nanodrop and 233 ug/ml by Bradford method using BSA as the standard;

### Source:

Rabbit

### Isotype:

IgG

### Immunogen Catalog Number:

AG4527

### GenBank Accession Number:

BC035729

### GeneID (NCBI):

489

### UNIPROT ID:

Q93084

### Full Name:

ATPase, Ca<sup>++</sup> transporting, ubiquitous

### Calculated MW:

1043 aa, 114 kDa

### Observed MW:

97-110 kDa

### Purification Method:

Antigen affinity purification

### Recommended Dilutions:

WB 1:2000-1:12000

IP 0.5-4.0 ug for 1.0-3.0 mg of total protein lysate

IHC 1:20-1:200

## Applications

### Tested Applications:

WB, IP, IHC, ELISA

### Cited Applications:

WB, IHC, IF

### Species Specificity:

human, mouse, rat

### Cited Species:

human, mouse

**Note-IHC: suggested antigen retrieval with TE buffer pH 9.0; (\*) Alternatively, antigen retrieval may be performed with citrate buffer pH 6.0**

### Positive Controls:

WB : mouse heart tissue, K-562 cells

IP : mouse skeletal muscle tissue,

IHC : human pancreas cancer tissue,

## Background Information

The SERCA, which pumps cytosolic Ca<sup>2+</sup> into the ER, is an imperative maintainer of ER Ca<sup>2+</sup> homeostasis. The mammalian SERCA family is comprised of three tissue-specific members, SERCA1-3. SERCA3 is present in endothelial and epithelial cells of various tissues. SERCA3 helps regulate intracellular Ca<sup>2+</sup>, which is critical for maintaining normal INS secretion and is closely linked to metabolism, neuronal plasticity, gene transcription, cell growth, differentiation, apoptosis, protein folding and carcinogenesis. Several isoforms of SERCA3 exist due to the alternative splicing.

## Notable Publications

Author	Pubmed ID	Journal	Application
Minmin Fan	36561988	Acta Pharm Sin B	WB
Hengjiang Guo	28066247	Front Pharmacol	WB
Xiangyu Ma	39083201	Sci China Life Sci	IF

## Storage

### Storage:

Store at -20°C. Stable for one year after shipment.

### Storage Buffer:

PBS with 0.02% sodium azide and 50% glycerol pH 7.3.

Aliquoting is unnecessary for -20°C storage

\*\*\* 20ul sizes contain 0.1% BSA

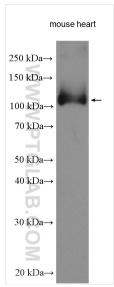
For technical support and original validation data for this product please contact:

T: 1 (888) 4PTGLAB (1-888-478-4522) (toll free in USA), or 1(312) 455-8498 (outside USA)

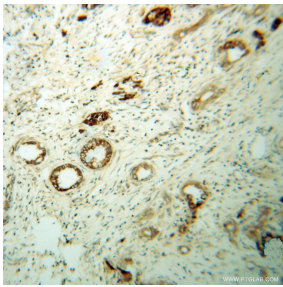
E: proteintech@ptglab.com  
W: ptglab.com

This product is exclusively available under Proteintech Group brand and is not available to purchase from any other manufacturer.

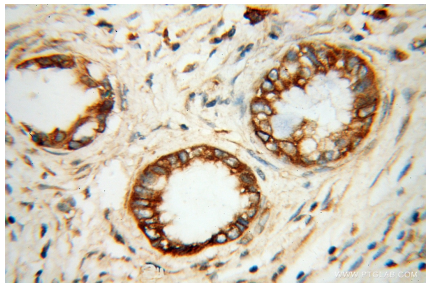
Selected Validation Data



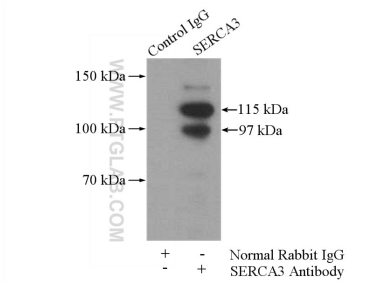
Mouse heart lysates were subjected to SDS PAGE followed by western blot with 13619-1-AP (SERCA3 antibody) at dilution of 1:6000 incubated at room temperature for 1.5 hours.



Immunohistochemical analysis of paraffin-embedded human pancreas cancer using 13619-1-AP (SERCA3 antibody) at dilution of 1:100 (under 10x lens).



Immunohistochemical analysis of paraffin-embedded human pancreas cancer using 13619-1-AP (SERCA3 antibody) at dilution of 1:100 (under 40x lens).



IP result of anti-SERCA3 (IP:13619-1-AP, 4ug; Detection:13619-1-AP 1:500) with mouse skeletal muscle tissue lysate 3600ug.