

For Research Use Only

NSMCE2 Polyclonal antibody

Catalog Number: 13627-1-AP

Featured Product

1 Publications



Basic Information

Catalog Number: 13627-1-AP	GenBank Accession Number: BC032797	Purification Method: Antigen affinity purification
Size: 150ul, Concentration: 133 µg/ml by Bradford method using BSA as the standard;	GeneID (NCBI): 286053	Recommended Dilutions: WB 1:500-1:2000 IHC 1:50-1:500
Source: Rabbit	Full Name: non-SMC element 2, MMS21 homolog (S. cerevisiae)	
Isotype: IgG	Calculated MW: 247 aa, 28 kDa	
Immunogen Catalog Number: AG4545	Observed MW: 28-32 kDa	

Applications

Tested Applications: IHC, WB, ELISA	Positive Controls: WB : HeLa cells, Jurkat cells, U2OS cells
Cited Applications: WB	IHC : mouse testis tissue, mouse ovary tissue
Species Specificity: human, mouse, rat	
Cited Species: human	

Note-IHC: suggested antigen retrieval with TE buffer pH 9.0; (*) Alternatively, antigen retrieval may be performed with citrate buffer pH 6.0

Background Information

Notable Publications

Author	Pubmed ID	Journal	Application
Stephanie Pei Tung Yiu	35263599	Cell Rep	WB

Storage

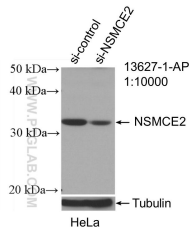
Storage:
Store at -20°C. Stable for one year after shipment.
Storage Buffer:
PBS with 0.02% sodium azide and 50% glycerol pH 7.3.
Aliquoting is unnecessary for -20°C storage

*** 20ul sizes contain 0.1% BSA

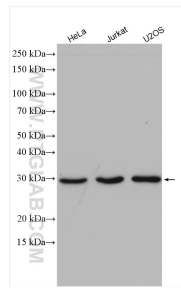
For technical support and original validation data for this product please contact:
T: 1 (888) 4PTGLAB (1-888-478-4522) (toll free in USA), or 1(312) 455-8498 (outside USA)
E: proteintech@ptglab.com
W: ptglab.com

This product is exclusively available under Proteintech Group brand and is not available to purchase from any other manufacturer.

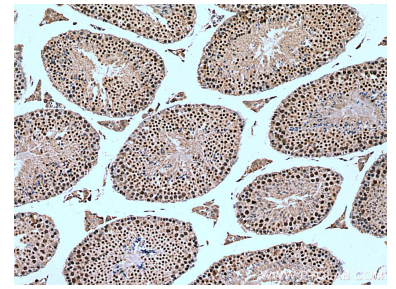
Selected Validation Data



WB result of NSMCE2 antibody (13627-1-AP; 1:10000; incubated at room temperature for 1.5 hours) with sh-Control and sh-NSMCE2 transfected HeLa cells.



Various lysates were subjected to SDS PAGE followed by western blot with 13627-1-AP (NSMCE2 antibody) at dilution of 1:1000 incubated at room temperature for 1.5 hours.



Immunohistochemical analysis of paraffin-embedded mouse testis tissue slide using 13627-1-AP (NSMCE2 antibody) at dilution of 1:200 (under 10x lens). Heat mediated antigen retrieval with Tris-EDTA buffer (pH 9.0).