

For Research Use Only

RALA Polyclonal antibody

Catalog Number: 13629-1-AP

Featured Product

7 Publications



Basic Information

Catalog Number:

13629-1-AP

Size:

150ul, Concentration: 240 ug/ml by Nanodrop and 200 ug/ml by Bradford method using BSA as the standard;

Source:

Rabbit

Isotype:

IgG

Immunogen Catalog Number:

AG4547

GenBank Accession Number:

BC039858

GeneID (NCBI):

5898

UNIPROT ID:

P11233

Full Name:

v-ral simian leukemia viral oncogene homolog A (ras related)

Calculated MW:

206 aa, 24 kDa

Observed MW:

24 kDa

Purification Method:

Antigen affinity purification

Recommended Dilutions:

WB: 1:500-1:2000

IHC: 1:50-1:500

Applications

Tested Applications:

WB, IHC, ELISA

Cited Applications:

WB, IHC

Species Specificity:

human, mouse, rat

Cited Species:

human, mouse

Note-IHC: suggested antigen retrieval with TE buffer pH 9.0; (*) Alternatively, antigen retrieval may be performed with citrate buffer pH 6.0

Positive Controls:

WB: mouse brain tissue, human brain tissue, rat brain tissue, fetal human brain tissue, MCF-7 cells, HeLa cells

IHC: human breast cancer tissue,

Background Information

RALA belongs to the small GTPase superfamily. Multifunctional GTPase involved in a variety of cellular processes including gene expression, cell migration, cell proliferation, oncogenic transformation and membrane trafficking. RALA plays a role in the early stages of cytokinesis and is required to tether the exocyst to the cytokinetic furrow. The RALA-exocyst complex regulates integrin-dependent membrane raft exocytosis and growth signaling. As an effector of the proto-oncogene Ras, it plays an important role in the molecular pathology of human malignancies.

Notable Publications

Author	Pubmed ID	Journal	Application
Yoshihiro Miyagawa	33110478	Oncotarget	WB
Yuting Wang	34869198	Front Chem	WB, IHC
Liang Jiang	25343104	Intractable Rare Dis Res	WB

Storage

Storage:

Store at -20°C. Stable for one year after shipment.

Storage Buffer:

PBS with 0.02% sodium azide and 50% glycerol, pH7.3

Aliquoting is unnecessary for -20°C storage

*** 20ul sizes contain 0.1% BSA

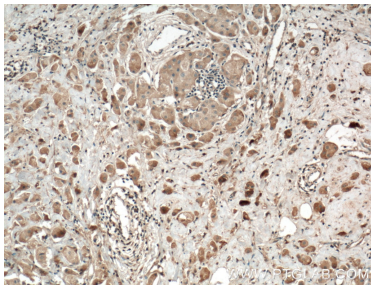
For technical support and original validation data for this product please contact:

T: 1 (888) 4PTGLAB (1-888-478-4522) (toll free in USA), or 1(312) 455-8498 (outside USA)

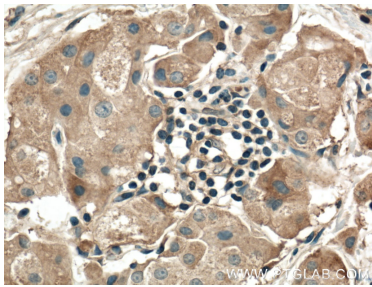
E: proteintech@ptglab.com
W: ptglab.com

This product is exclusively available under Proteintech Group brand and is not available to purchase from any other manufacturer.

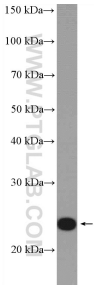
Selected Validation Data



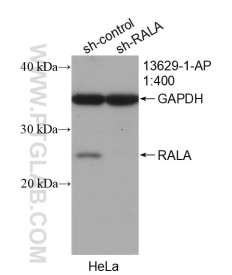
Immunohistochemical analysis of paraffin-embedded human breast cancer tissue slide using 13629-1-AP (RALA Antibody) at dilution of 1:200 (under 10x lens). Heat mediated antigen retrieval with Tris-EDTA buffer (pH 9.0).



Immunohistochemical analysis of paraffin-embedded human breast cancer tissue slide using 13629-1-AP (RALA Antibody) at dilution of 1:200 (under 40x lens). Heat mediated antigen retrieval with Tris-EDTA buffer (pH 9.0).



mouse brain tissue were subjected to SDS PAGE followed by western blot with 13629-1-AP (RALA Antibody) at dilution of 1:1000 incubated at room temperature for 1.5 hours.



WB result of RALA antibody (13629-1-AP; 1:400; incubated at room temperature for 1.5 hours) with sh-Control and sh-RALA transfected HeLa cells.