

For Research Use Only

CREB3L4 Polyclonal antibody

Catalog Number: 13630-1-AP



Basic Information

Catalog Number: 13630-1-AP	GenBank Accession Number: BC038962	Purification Method: Antigen affinity purification
Size: 150ul , Concentration: 550 µg/ml by Nanodrop and 300 µg/ml by Bradford method using BSA as the standard;	GeneID (NCBI): 148327	Recommended Dilutions: WB 1:500-1:1000 IF 1:50-1:500
Source: Rabbit	Full Name: cAMP responsive element binding protein 3-like 4	
Isotype: IgG	Calculated MW: 395 aa, 43 kDa	
Immunogen Catalog Number: AG4548	Observed MW: 43 kDa	

Applications

Tested Applications: IF, WB, ELISA	Positive Controls: WB : HepG2 cells, HL-60 cells
Species Specificity: human	IF : MCF-7 cells,

Background Information

CREB3L4 (cAMP responsive element binding protein 3-like 4), also named as AIBZIP, CREB4 and ATCE1, is a member of the CREB/ATF transcription factor family. CREB3L4 may play a role in the unfolded protein response, characterized by their regulation of gene expression through the cAMP-responsive element (PMID: 22829733). CREB3L4 is highly expressed in multiple human cancers, such as human breast carcinoma, prostate cancer (PMID: 32026099, PMID: 28338058). The molecular weight of CREB3L4 is 43 kDa and 55 kDa precursor was reported. Due to glycosylation, CREB3L4 can be observed with molecular weights of 35 and 41 kDa (PMID: 25412305, 15938716).

Storage

Storage:
Store at -20°C. Stable for one year after shipment.
Storage Buffer:
PBS with 0.02% sodium azide and 50% glycerol pH 7.3.
Aliquoting is unnecessary for -20°C storage

*** 20ul sizes contain 0.1% BSA

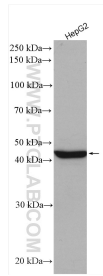
For technical support and original validation data for this product please contact:

T: 1 (888) 4PTGLAB (1-888-478-4522) (toll free in USA), or 1(312) 455-8498 (outside USA)

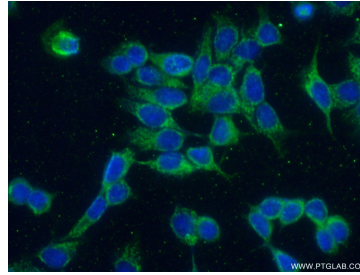
E: proteintech@ptglab.com
W: ptglab.com

This product is exclusively available under Proteintech Group brand and is not available to purchase from any other manufacturer.

Selected Validation Data



HepG2 cells were subjected to SDS PAGE followed by western blot with 13630-1-AP (CREB3L4 antibody) at dilution of 1:500 incubated at room temperature for 1.5 hours.



Immunofluorescent analysis of (-20°C Ethanol) fixed MCF-7 cells using 13630-1-AP (CREB3L4 antibody) at dilution of 1:50 and Alexa Fluor 488-conjugated AffiniPure Goat Anti-Rabbit IgG(H+L).