

For Research Use Only

# BCAT1 Polyclonal antibody, PBS Only

Catalog Number: 13640-1-PBS

Featured Product



## Basic Information

**Catalog Number:**

13640-1-PBS

**Size:**

100ug, Concentration: 1 mg/ml by Nanodrop;

**Source:**

Rabbit

**Isotype:**

IgG

**Immunogen Catalog Number:**

AG4574

**GenBank Accession Number:**

BC033864

**GeneID (NCBI):**

586

**UNIPROT ID:**

P54687

**Full Name:**

branched chain aminotransferase 1, cytosolic

**Calculated MW:**

320 aa, 36 kDa

**Observed MW:**

43-45 kDa

**Purification Method:**

Antigen affinity purification

## Applications

**Tested Applications:**

WB, IHC, IF/ICC, ELISA

**Species Specificity:**

human, mouse, rat

## Background Information

BCAT1, also named branched-chain amino acid transaminase1, is a cytosolic enzyme responsible for the reversible transamination of leucine, isoleucine, and valine that catalyzes the transformation of branched-chain L-amino acids (BCAA) into branched-chain  $\alpha$ -ketoacids (BCKA), thereby providing macromolecule precursors. It has been reported that BCAT1 is associated with tumor growth and disease progression (PMID:29255149). The 13640-1-AP antibody detects the bands around 43-45 kDa for different isoforms and higher molecular weight for phosphorylation modification of this protein.

## Storage

**Storage:**

Store at -80°C.

**Storage Buffer:**

PBS only, pH7.3

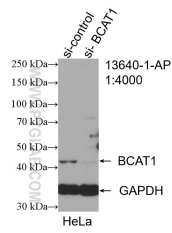
For technical support and original validation data for this product please contact:

T: 1 (888) 4PTGLAB (1-888-478-4522) (toll free in USA), or 1(312) 455-8498 (outside USA)

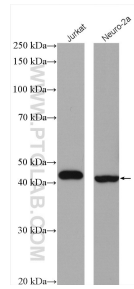
E: [proteintech@ptglab.com](mailto:proteintech@ptglab.com)  
W: [ptglab.com](http://ptglab.com)

This product is exclusively available under Proteintech Group brand and is not available to purchase from any other manufacturer.

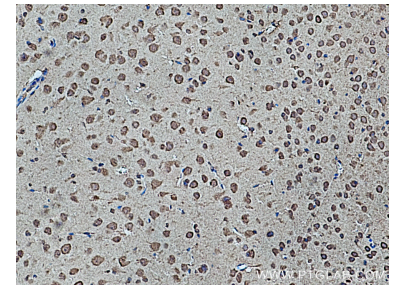
## Selected Validation Data



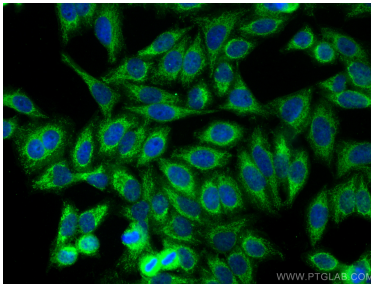
WB result of BCAT1/ECA39 antibody (13640-1-AP; 1:4000; incubated at room temperature for 1.5 hours) with sh-Control and sh-BCAT1/ECA39 transfected HeLa cells. This data was developed using the same antibody clone with 13640-1-PBS in a different storage buffer formulation.



Various lysates were subjected to SDS PAGE followed by western blot with 13640-1-AP (BCAT1/ECA39 antibody) at dilution of 1:2000 incubated at room temperature for 1.5 hours. This data was developed using the same antibody clone with 13640-1-PBS in a different storage buffer formulation.



Immunohistochemical analysis of paraffin-embedded mouse brain tissue slide using 13640-1-AP (BCAT1/ECA39 antibody) at dilution of 1:200 (under 10x lens). Heat mediated antigen retrieval with Tris-EDTA buffer (pH 9.0). This data was developed using the same antibody clone with 13640-1-PBS in a different storage buffer formulation.



Immunofluorescent analysis of (-20°C Ethanol) fixed HepG2 cells using BCAT1 antibody (13640-1-AP) at dilution of 1:400 and CoraLite®488-Conjugated AffiniPure Goat Anti-Rabbit IgG(H+L) (SA00013-2). This data was developed using the same antibody clone with 13640-1-PBS in a different storage buffer formulation.