

For Research Use Only

CST9L Polyclonal antibody

Catalog Number: 13649-1-AP



Basic Information

| | | |
|--|--|--|
| Catalog Number: 13649-1-AP | GenBank Accession Number: BC029656 | Purification Method: Antigen affinity purification |
| Size: 150ul , Concentration: 150 µg/ml by Nanodrop and 133 µg/ml by Bradford method using BSA as the standard; | GeneID (NCBI): 128821 | Recommended Dilutions: WB 1:500-1:1000 IHC 1:50-1:500 |
| Source: Rabbit | Full Name: cystatin 9-like | |
| Isotype: IgG | Calculated MW: 147 aa, 17 kDa | |
| Immunogen Catalog Number: AG4084 | Observed MW: 17 kDa | |

Applications

Tested Applications:
IHC, WB, ELISA

Species Specificity:
human

Note-IHC: *suggested antigen retrieval with TE buffer pH 9.0; (*) Alternatively, antigen retrieval may be performed with citrate buffer pH 6.0*

Positive Controls:

WB : human kidney tissue,

IHC : human testis tissue,

Background Information

Storage

Storage:
Store at -20°C. Stable for one year after shipment.
Storage Buffer:
PBS with 0.02% sodium azide and 50% glycerol pH 7.3.
Aliquoting is unnecessary for -20°C storage

*** 20ul sizes contain 0.1% BSA

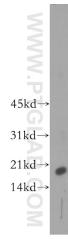
For technical support and original validation data for this product please contact:

T: 1 (888) 4PTGLAB (1-888-478-4522) (toll free in USA), or 1(312) 455-8498 (outside USA)

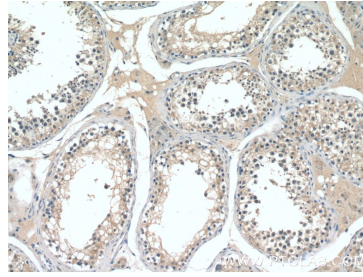
E: proteintech@ptglab.com
W: ptglab.com

This product is exclusively available under Proteintech Group brand and is not available to purchase from any other manufacturer.

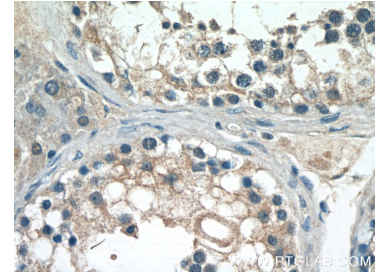
Selected Validation Data



human kidney tissue were subjected to SDS PAGE followed by western blot with 13649-1-AP (CST9L antibody) at dilution of 1:500 incubated at room temperature for 1.5 hours.



Immunohistochemical analysis of paraffin-embedded human testis tissue slide using 13649-1-AP (CST9L antibody) at dilution of 1:200 (under 10x lens).



Immunohistochemical analysis of paraffin-embedded human testis tissue slide using 13649-1-AP (CST9L antibody) at dilution of 1:200 (under 40x lens).