

For Research Use Only

# NARFL Polyclonal antibody

Catalog Number: 13652-1-AP **1 Publications**



## Basic Information

<b>Catalog Number:</b> 13652-1-AP	<b>GenBank Accession Number:</b> BC030248	<b>Purification Method:</b> Antigen affinity purification
<b>Size:</b> 150ul , Concentration: 450 µg/ml by Nanodrop and 300 µg/ml by Bradford method using BSA as the standard;	<b>GeneID (NCBI):</b> 64428	<b>Recommended Dilutions:</b> WB 1:1000-1:4000 IHC 1:50-1:500
<b>Source:</b> Rabbit	<b>Full Name:</b> nuclear prelamin A recognition factor-like	
<b>Isotype:</b> IgG	<b>Calculated MW:</b> 476 aa, 53 kDa	
<b>Immunogen Catalog Number:</b> AG4217	<b>Observed MW:</b> 26-28 kDa	

## Applications

<b>Tested Applications:</b> IHC, WB, ELISA	<b>Positive Controls:</b> WB : HeLa cells, HEK-293 cells
<b>Cited Applications:</b> IF	<b>IHC :</b> human colon tissue,
<b>Species Specificity:</b> human, mouse, rat	
<b>Cited Species:</b> human	

**Note-IHC: suggested antigen retrieval with TE buffer pH 9.0; (\*) Alternatively, antigen retrieval may be performed with citrate buffer pH 6.0**

## Background Information

NARFL(Nuclear prelamin A recognition factor-like protein) is also named as PRN and belongs to the NARF family. This protein plays a role in cytoplasmic Fe-S protein biogenesis in mammalian cells. NARFL has 3 isoforms produced by alternative splicing.

## Notable Publications

Author	Pubmed ID	Journal	Application
Hongzhou Liu	37821486	Sci Rep	IF

## Storage

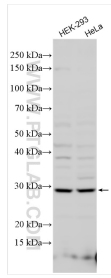
**Storage:**  
Store at -20°C. Stable for one year after shipment.  
**Storage Buffer:**  
PBS with 0.02% sodium azide and 50% glycerol pH 7.3.  
Aliquoting is unnecessary for -20°C storage

\*\*\* 20ul sizes contain 0.1% BSA

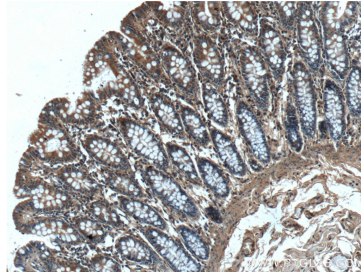
For technical support and original validation data for this product please contact:  
T: 1 (888) 4PTGLAB (1-888-478-4522) (toll free in USA), or 1(312) 455-8498 (outside USA)  
E: proteintech@ptglab.com  
W: ptglab.com

This product is exclusively available under Proteintech Group brand and is not available to purchase from any other manufacturer.

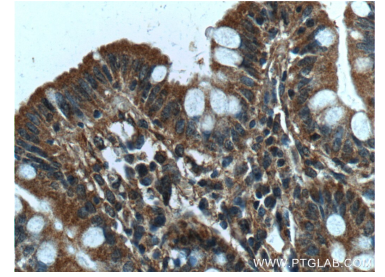
## Selected Validation Data



Various lysates were subjected to SDS PAGE followed by western blot with 13652-1-AP (NARFL antibody) at dilution of 1:2000 incubated at room temperature for 1.5 hours.



Immunohistochemical analysis of paraffin-embedded human colon tissue slide using 13652-1-AP (NARFL antibody) at dilution of 1:200 (under 10x lens).



Immunohistochemical analysis of paraffin-embedded human colon tissue slide using 13652-1-AP (NARFL antibody) at dilution of 1:200 (under 40x lens).