

For Research Use Only

DNASE1L1 Polyclonal antibody

Catalog Number: 13653-1-AP

2 Publications



Basic Information

Catalog Number:

13653-1-AP

Size:

150ul, Concentration: 400 µg/ml by Nanodrop and 213 µg/ml by Bradford method using BSA as the standard;

Source:

Rabbit

Isotype:

IgG

Immunogen Catalog Number:

AG4222

GenBank Accession Number:

BC028092

GeneID (NCBI):

1774

Full Name:

deoxyribonuclease I-like 1

Calculated MW:

302 aa, 34 kDa

Observed MW:

34 kDa

Purification Method:

Antigen affinity purification

Recommended Dilutions:

WB 1:500-1:1000

IP 0.5-4.0 µg for IP and 1:500-1:1000

for WB

IHC 1:20-1:200

IF 1:10-1:100

Applications

Tested Applications:

IF, IHC, IP, WB, ELISA

Cited Applications:

IF, WB

Species Specificity:

human, mouse, rat

Cited Species:

rat

Note-IHC: suggested antigen retrieval with TE buffer pH 9.0; (*) Alternatively, antigen retrieval may be performed with citrate buffer pH 6.0

Positive Controls:

WB: mouse skeletal muscle tissue, rat skeletal muscle tissue

IP: mouse skeletal muscle tissue,

IHC: human skeletal muscle tissue,

IF: MCF-7 cells,

Background Information

Notable Publications

Author	Pubmed ID	Journal	Application
Zhu Bin	37454250	J Tradit Chin Med	WB
Huajian Yang	37048150	Cells	IF

Storage

Storage:

Store at -20°C. Stable for one year after shipment.

Storage Buffer:

PBS with 0.02% sodium azide and 50% glycerol pH 7.3.

Aliquoting is unnecessary for -20°C storage

*** 20ul sizes contain 0.1% BSA

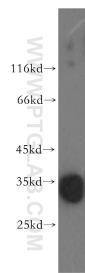
For technical support and original validation data for this product please contact:

T: 1 (888) 4PTGLAB (1-888-478-4522) (toll free in USA), or 1(312) 455-8498 (outside USA)

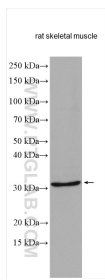
E: proteintech@ptglab.com
W: ptglab.com

This product is exclusively available under Proteintech Group brand and is not available to purchase from any other manufacturer.

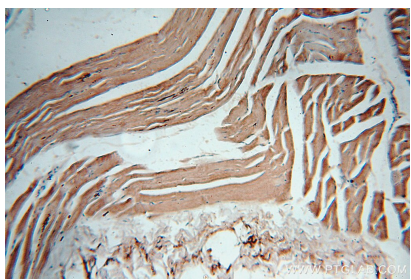
Selected Validation Data



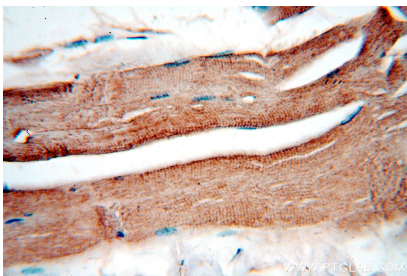
mouse skeletal muscle tissue were subjected to SDS PAGE followed by western blot with 13653-1-AP (DNASE1L1 antibody) at dilution of 1:1000 incubated at room temperature for 1.5 hours.



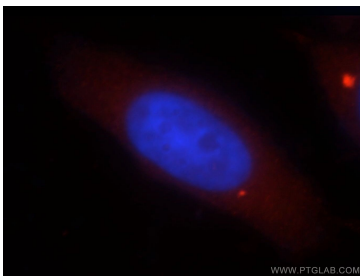
rat skeletal muscle tissue were subjected to SDS PAGE followed by western blot with 13653-1-AP (DNASE1L1 antibody) at dilution of 1:500 incubated at room temperature for 1.5 hours.



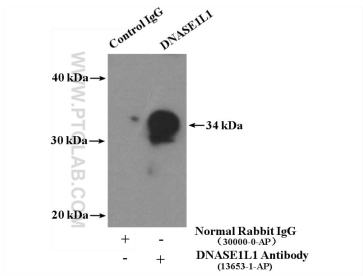
Immunohistochemical analysis of paraffin-embedded human skeletal muscle using 13653-1-AP (DNASE1L1 antibody) at dilution of 1:50 (under 10x lens).



Immunohistochemical analysis of paraffin-embedded human skeletal muscle using 13653-1-AP (DNASE1L1 antibody) at dilution of 1:50 (under 40x lens).



Immunofluorescent analysis of MCF-7 cells, using DNASE1L1 antibody 13653-1-AP at 1:25 dilution and Rhodamine-labeled goat anti-rabbit IgG (red). Blue pseudocolor = DAPI (fluorescent DNA dye).



IP Result of anti-DNASE1L1 (IP:13653-1-AP, 4ug; Detection:13653-1-AP 1:800) with mouse skeletal muscle tissue lysate 4000ug.