

For Research Use Only

# SLC35A2 Polyclonal antibody

Catalog Number: 13657-1-AP

Featured Product

5 Publications



## Basic Information

### Catalog Number:

13657-1-AP

### Size:

150ul, Concentration: 550 ug/ml by Nanodrop and 280 ug/ml by Bradford method using BSA as the standard;

### Source:

Rabbit

### Isotype:

IgG

### Immunogen Catalog Number:

AG4524

### GenBank Accession Number:

BC035747

### GeneID (NCBI):

7355

### UNIPROT ID:

P78381

### Full Name:

solute carrier family 35 (UDP-galactose transporter), member A2

### Calculated MW:

396 aa, 41 kDa

### Observed MW:

41 kDa, 32 kDa

### Purification Method:

Antigen affinity purification

### Recommended Dilutions:

WB 1:500-1:2000

IHC 1:50-1:500

## Applications

### Tested Applications:

WB, IHC, ELISA

### Cited Applications:

WB, IHC

### Species Specificity:

human, mouse, rat

### Cited Species:

human

**Note-IHC: suggested antigen retrieval with TE buffer pH 9.0; (\*) Alternatively, antigen retrieval may be performed with citrate buffer pH 6.0**

### Positive Controls:

WB : HEK-293 cells, mouse brain tissue

IHC : human liver cancer tissue, human colon tissue

## Notable Publications

Author	Pubmed ID	Journal	Application
Hongxia Cheng	36454514	Cell Oncol (Dordr)	IHC, WB
Xiaohui Luo	38151177	Gene	WB
Xiaochen Yang	38143314	FEBS J	IHC, WB

## Storage

### Storage:

Store at -20°C. Stable for one year after shipment.

### Storage Buffer:

PBS with 0.02% sodium azide and 50% glycerol pH 7.3.

Aliquoting is unnecessary for -20°C storage

\*\*\* 20ul sizes contain 0.1% BSA

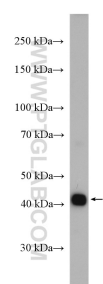
For technical support and original validation data for this product please contact:

T: 1 (888) 4PTGLAB (1-888-478-4522) (toll free in USA), or 1(312) 455-8498 (outside USA)

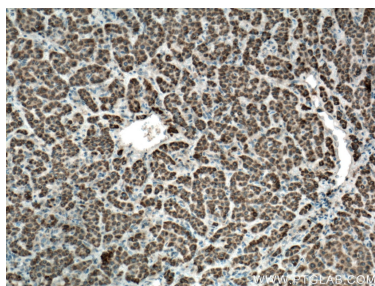
E: [proteintech@ptglab.com](mailto:proteintech@ptglab.com)  
W: [ptglab.com](http://ptglab.com)

This product is exclusively available under Proteintech Group brand and is not available to purchase from any other manufacturer.

## Selected Validation Data



HEK-293 cells were subjected to SDS PAGE followed by western blot with 13657-1-AP (SLC35A2 antibody) at dilution of 1:1000 incubated at room temperature for 1.5 hours.



Immunohistochemical analysis of paraffin-embedded human liver cancer tissue slide using 13657-1-AP (SLC35A2 antibody) at dilution of 1:200 (under 10x lens. Heat mediated antigen retrieval with Tris-EDTA buffer (pH 9.0).